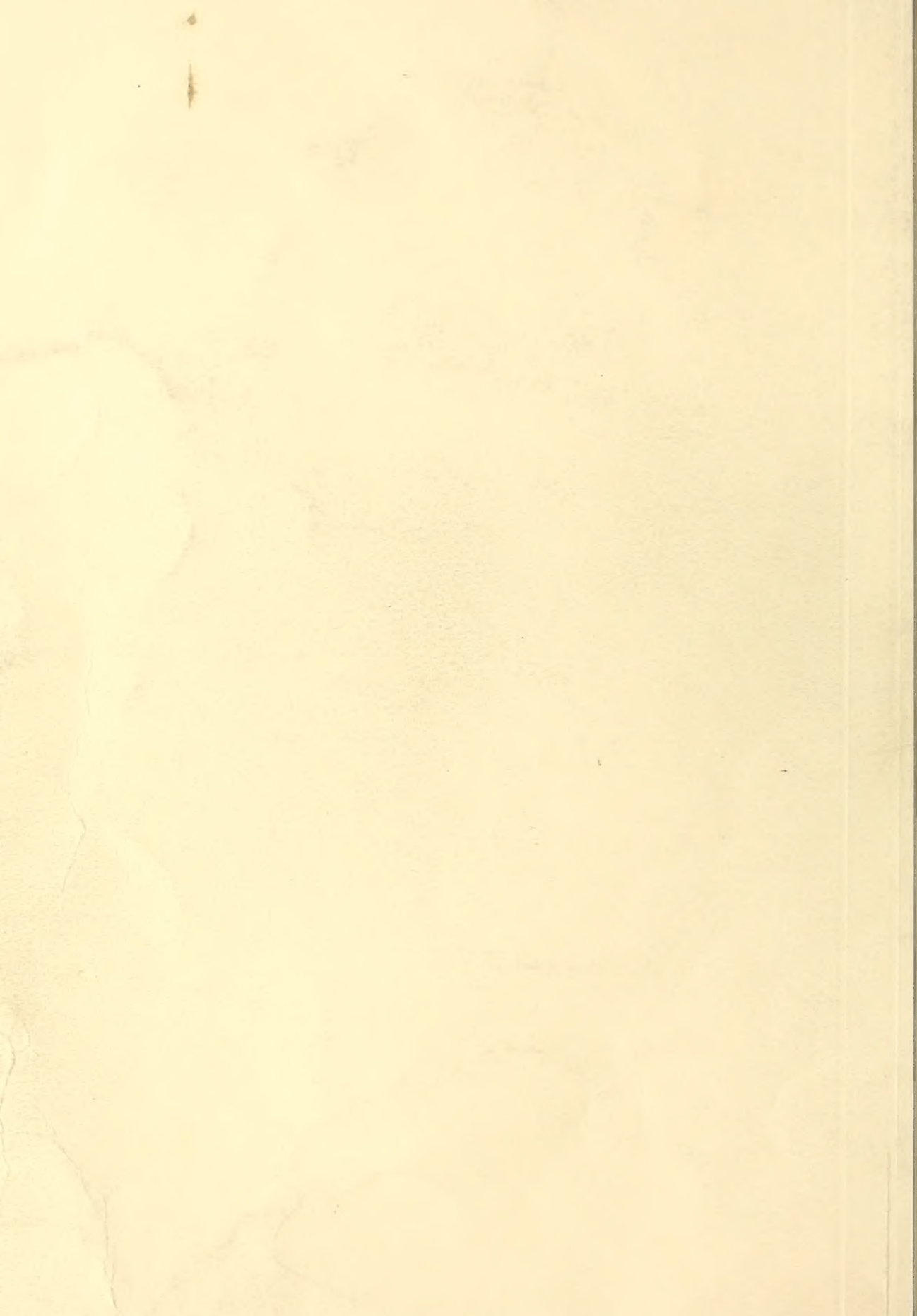


Historic, archived document

Do not assume content reflects current scientific knowledge, policies, or practices.



1899

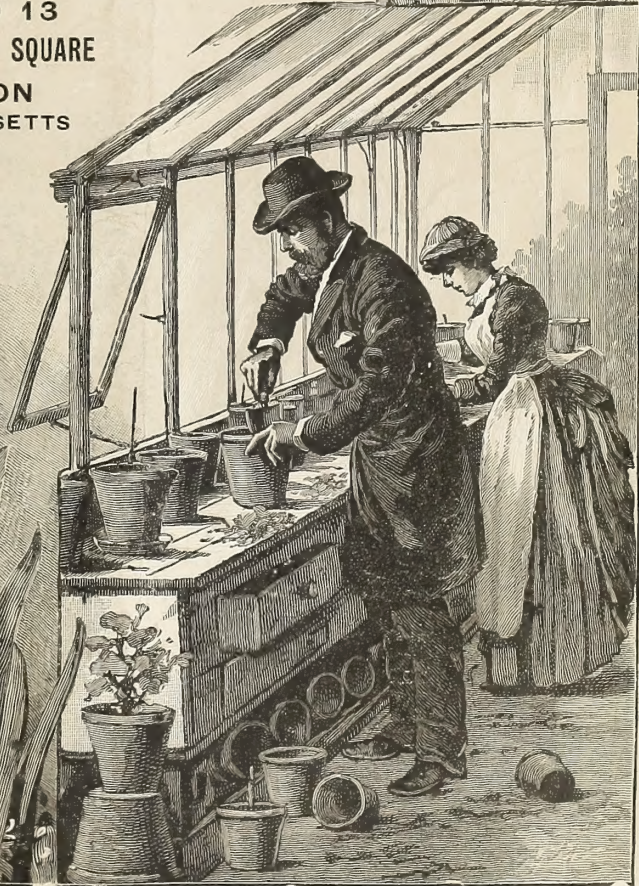
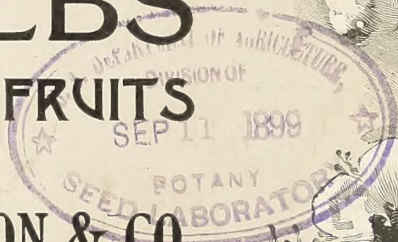
AUTUMN CATALOGUE

OF

BULBS
AND SMALL FRUITS

W. W. RAWSON & CO.

12 AND 13
FANEUIL HALL SQUARE
BOSTON
MASSACHUSETTS





W. W. Rawson & Co.

Is the only firm in Boston doing an exclusive business in

SEEDS, BULBS AND PLANTS

WITH A SALESROOM ON THE GROUND FLOOR

THE BEST OF FACILITIES FOR SHOWING GOODS

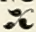
GREENHOUSES AT ARLINGTON, where we grow the plants we sell.

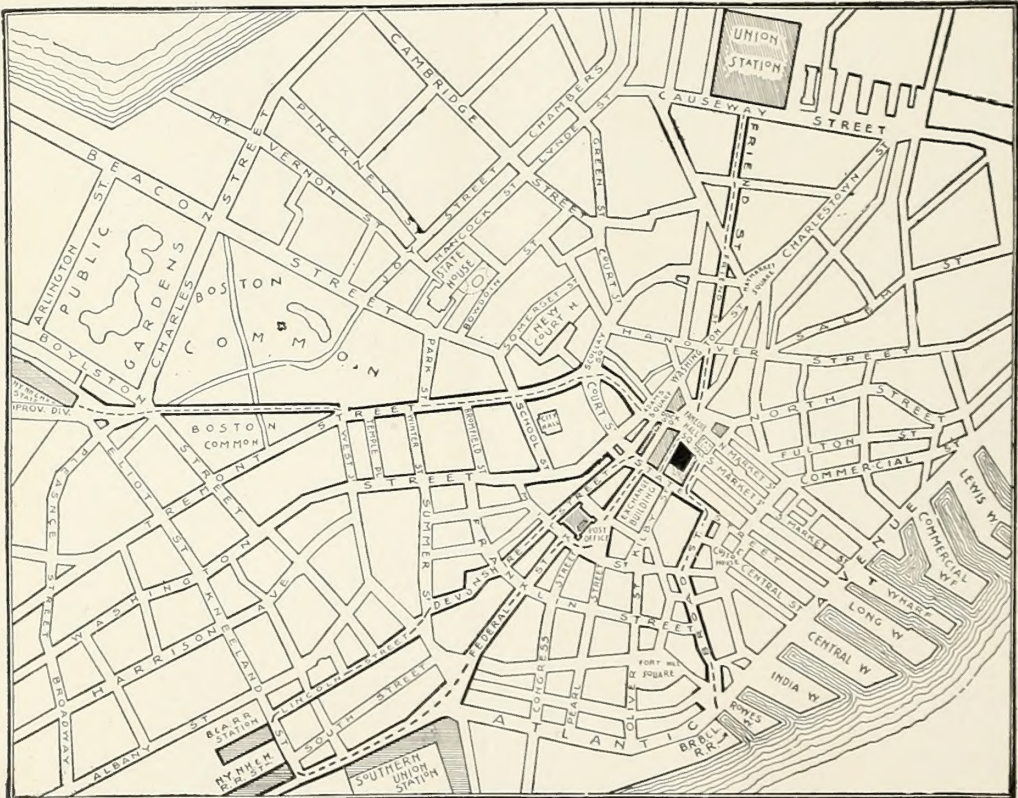
TELEPHONES:

STORE 2345 BOSTON
 GREENHOUSES AND }
 RESIDENCE 15-2 ARLINGTON
 MARKET GARDENS 15-3 ARLINGTON

OUR STORE situated directly opposite the Old Faneuil Hall, just at the beginning of the market district, is of easy access from Washington or State Street without going through the crowded part of the market, so objectionable to many of our lady customers especially.

PLANT DEPARTMENT Several large greenhouses have been added to our plant at Arlington, which will be used exclusively in growing plants for the retail trade. Bedding plants in spring a specialty.

SHIPPING ROOM  A large room on second floor is devoted to packing and shipping of goods. It is entirely separate, and has every facility necessary for the prompt despatch of goods by express or freight.



The Black Spot shown in center of diagram represents our store. The darker lines show the most direct way from the several railroad stations to our new location, which, as you will see, is in the center of the Hub.

12 and 13 Faneuil Hall Square, = = Boston, Mass.

No class of Flowering Plants

Are easier to grow and surer to bloom than those produced by bulbs; whether grown in pots or boxes in the houses during the winter, or planted in the open ground for early spring blooming, the simplest culture being awarded by vigorous growth and abundant flowers.

Crocus, Scillias, Snowdrops, if planted in the fall in sunny locations will in the spring produce their fine-colored flowers usually before the snow is gone from the more secluded spots in early March; and during April and May the same beds may be made brilliant and charming by the lovely **Hyacinths, Tulips, Daffodils**, etc., which make a display of floral beauty rarely equalled.

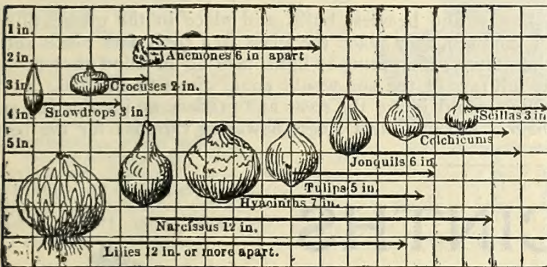
For out-of-doors planting the sooner after the first of October the bulbs are in the ground the better will be the results in the flowering when spring comes.



Don't wait, but send us your order

As soon as you can after receiving this catalogue. You will then receive the varieties you desire and better bulbs, being perfectly sound; while if left until later there is always a tendency towards reduced vitality, when such good results are not obtained.

Remittances should be made either in Express Money Orders, Post-office Orders, Registered Letters, or by draft on New York or Boston. Post-office Orders are preferable to all others, as there is no possibility of loss; but when these cannot be obtained Registered Letters are sure to reach their destination. *We will guarantee the safe arrival of all packages when sent by express.*



DEPTH BULBS SHOULD BE PLANTED.

To answer the many inquiries regarding the planting of bulbs, the above chart has been carefully prepared to illustrate not only the depth but distance apart the bulbs should be planted.

Free delivery on bulbs to all parts of the United States at single and dozen prices quoted, except where noted. *All bulbs under the free delivery system when taken at store are subject to a ten per cent discount.*

Shipments can be made in September with nearly all the bulbs, except a few sorts that are not sufficiently matured, and which cannot be shipped until November. Among the late sorts we mention the following; viz., Iris Kämpferi, Lily of the Valley, Lilies. When orders for these are included with orders for earlier sorts, it is our custom to forward such as are ready, and make a separate shipment of the later sorts. Should our customers prefer to have us make but one shipment, we will hold all and send when later bulbs are received.

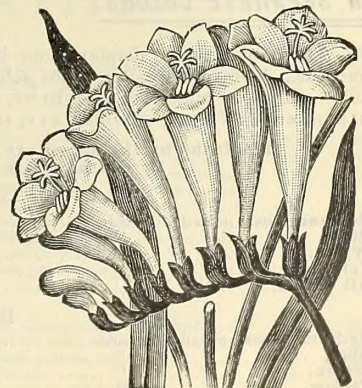
We make no charge for packing and shipping.



GREVILLEA ROBUSTA.— See page 20.

In giving orders, please state explicitly by what conveyance they are to be forwarded. When no particular route is designated, we forward according to the best of our judgment.

Orders from unknown correspondents must be accompanied by a remittance or a satisfactory Boston reference. In making a remittance purchasers will please be particular and send a sufficient amount to cover their orders. When only a part of the amount is remitted, goods will be sent only to the amount of the remittance.



FREESIA.— See page 13.

SINGLE HYACINTHS

Hyacinths by the Single and Dozen are delivered free in the United States.
By the hundred purchaser pays transit.

RED and ROSE.

	Each.	Doz.
Amy, very dark red, fine spike.....	\$0 12	\$1 25
Baron van Thuyll, rose, fine spike.....	12	1 25
Charles Dickens, dark rose, extra fine.....	15	1 50
Cosmos, dark rose, clear center.....	12	1 25
Fabiola, fine rose, large spike.....	12	1 25
Fireball, dark.....	15	1 50
Garibaldi, brilliant red, very fine.....	15	1 50
General Pelicier, dark red, very early.....	12	1 25
Gertrude, fine red, good spike.....	12	1 25
Gigantea, pink, extra large spike.....	12	1 25
Josephine, orange red, early, very fine.....	15	1 50
L'Incomparable, fine brilliant, extra fine.....	15	1 50
Lord Macaulay, dark rose, extra large bells.....	12	1 25
Moreno, pink, extra fine spike, early.....	15	1 50
Norma, pink, extra large bells, early.....	12	1 25
Robert Steiger, deep red, good spike.....	12	1 25

WHITE and BLUSH WHITE.

Aiba Superbissima, pure white, fine truss.....	12	1 25
Baron van Thuyll, pure white, large truss, early...	12	1 25
Blanchard, pure white, extra long spike.....	12	1 25
Grandeur a Merveille, rosy white, extra.....	12	1 25
La Franchise, waxy white, large bells.....	12	1 25
La Grandesse, pure white, large bells, extra fine.....	15	1 50
L'Innocence, pure white, extra large bells.....	15	1 50
Lord Gray, bluish white, very early.....	15	1 50
Madame van der Hoop, pure white, large bells..	12	1 25
Mammoth, rosy white, extra large bells.....	15	1 50
Maria Stuart, pure white, good spike, extra quality.....	15	1 50



HYACINTH GROWING IN POT.

	Each.	Doz.
Mont Blanc, pure white, extra large bells, splendid...	\$0 15	\$1 50
Queen Victoria, pure white, large bells.....	12	1 25
Snowball, pure snow white, fine large truss. The finest of all the whites.....	20	2 00
Voltaire, pale bluish white, extra fine.....	10	1 00

BLUE.

Baron van Thuyll, bright blue, compact spike.....	12	1 25
Charles Dickens, porcelain blue, shaded with purple, excellent spike.....	12	1 25
Czar Peter, light porcelain blue, extra fine spike.....	15	1 50
Grand Lilac, lilac, fine truss and bells.....	15	1 50
Grand Maitre, deep porcelain, extra large spike.....	12	1 25
King of the Blue, dark indigo blue, extra.....	12	1 25
La Perouse, clear porcelain blue.....	12	1 25
Marie, dark blue, large spike, Pineman, deep porcelain, large bells, immense truss, extra fine.....	15	1 50
Porcelain Scepter, porcelain blue.....	12	1 25
Regulus, light blue, large bells and spike.....	12	1 25
Sir Henry Buckley, black, extra early, large spike.....	12	1 25
William I., early, very dark, glittering.....	12	1 25

YELLOW.

Alida Jacoba, bright canary yellow.....	12	1 25
Bird of Paradise, pure yellow, compact spike, one of the finest yellows.....	20	2 00
Duc de Malakoff, orange yellow, early.....	15	1 50
Ida, bright primrose, extra fine spike.....	15	1 50
King of the Yellows, pure yellow, large bells..	15	1 50
Koning van Holland, orange yellow, early.....	12	1 25
La pluie d'or, light yellow.....	12	1 25
L'or d'australie, clear yellow, large fine spike...	15	1 50

DOUBLE HYACINTHS

RED and ROSE.

	Each.	Doz.
Aacteur, dark rose, large bells.....	\$0 12	\$1 25
Alida Catharina, satiny rose, early.....	12	1 25
Bouquet Royal, dark center, very fine rose.....	12	1 25
Bouquet Tendre, dark red, early.....	12	1 25
Grootvorst, fine rose, large bells.....	12	1 25
Lord Wellington, rose, extra large bells, early..	15	1 50
Noble Par Merite, deep rose, extra good spike, very early.....	12	1 25
Princesse Royal, red and purple center.....	12	1 25
Prince of Orange, dark rose, fine spike, semi-double.....	12	1 25
Regina Victoria, salmon rose, early, good spike.	12	1 25

BLUE.

Bloksberg, light blue, good truss.....	12	1 25
Charles Dickens, dark, extra large bells.....	12	1 25
Garrick, dark, extra large spike, early.....	12	1 25
Laurens Koster, fine dark blue, extra large bells, the finest double blue.....	20	2 00

	Each.	Doz.
Lord Raglan, dark and black center, large bells..	\$0 12	\$1 25
Pasquin, light porcelain, with dark center.....	12	1 25

WHITE.

Anna Maria, with purple center, early.....	12	1 25
Bouquet Royal, pure white.....	12	1 25
Duchesse de Bedford, pure white, extra large..	15	1 50
La tour d'Auvergne, early pure white, extra large spike.....	12	1 25
La Virginite, white, with red center.....	12	1 25
Non plus ultra, white, with purple eye, fine spike,	12	1 25
Passe Virgo, early, with red center.....	12	1 25
Prince of Waterloo, pure white, with rose center.	12	1 25

YELLOW.

Bouquet d'Orange, dark orange, semi-double....	12	1 25
Goethe, sulphur yellow, good spike, early.....	12	1 25
Jaune Supreme, dark yellow, large bells.....	15	1 50
Ophir d'or, pure yellow.....	12	1 25
William III., yellow, with red center, fine compact spike.....	12	1 25

ROMAN HYACINTHS

This beautiful and valuable variety, if planted early in September and gently forced, will bloom in November, or their flowering may be retarded until Christmas by keeping them in a cool place. By successive plantings they may be had in bloom until March, being thus very useful for florists. The flowers, which are smaller than the ordinary Hyacinth, are produced in great profusion, each bulb throwing up three or four spikes of delicately-scented, clear, white blossoms. For a good effect, from three to five bulbs should be planted in a medium-sized pot.

At single and dozen price, delivered free in United States.
By the hundred purchaser pays transit.

	Each.	Dozen.	100.
Pure White, 1st size.....	\$0 04	\$0 40	\$2 75
" " extra large bulbs.....	05	50	3 00
Dark Rose.....	05	40	2 50
Light Pink.....	05	40	2 50
Light Blue.....	05	40	2 50

White Italian or Parisian

On account of the profusion of bloom, fragrant and graceful spikes, they are extensively grown by the florists for the winter flower markets. Blooming a little later than the Roman Hyacinth, they are useful for a succession of flowers.

5 cents each; 50 cents per dozen; \$2.75 per 100.

Grape, Musk and Feathered



ROMAN HYACINTH.

GRAPE An extremely pretty family of flowers, sometimes called "Blue Lily of the Valley"; entirely hardy, they will adapt themselves to the soil and situation as naturally as grass. A few bulbs will rapidly increase and produce each spring a mass of lovely bloom. For winter blooming they give great satisfaction; a few bulbs planted in a five-inch pot and treated the same as Hyacinths will produce a lovely potful of flowers.

Blue, two bulbs for 5 cts.; per dozen, 15 cts.; per 100, \$1.00
White, three " 10 " " " 25 " " 100, 1.50

MUSK An old and much esteemed sort; pretty flowers, exceedingly fragrant, with a musk-like scent; entirely hardy. 15 cents each; \$1.50 per dozen.

FEATHERED It is a very curious plant, and well worthy of culture in pots as an odd and interesting flower; is entirely hardy. The color is deep blue, tinged with red.

Three for 10 cents; 25 cents per dozen; \$1.50 per 100.

Hyacinths in Beds

The bulbs we supply here are not the common mixed, but selected from the named varieties, and put in at a reduced price.

For the convenience of our customers we have given the number of bulbs required for a few of the most popular-sized beds.



A bed 7 feet square of Hyacinths, arranged like illustration, planted 7 inches apart, would take 38 bulbs for each division, or 150 bulbs in all; or if planted 6 inches apart, 50 bulbs for each division, or 200 bulbs in all.

Choice of the following colors: Red, crimson, white, pink, light blue, dark blue and yellow.

Price of the 150 bulbs, \$7.50 } Purchaser pay-
" " 200 " 10.00 } ing transit.

A bed 15 feet in circumference or 5 feet across, if planted 6 inches apart, requires 100 hyacinths; if 7 inches apart, 84 hyacinths.

Arranged in circles of 5 rows around the bed, planted 6 inches apart, the first center row would require 9 bulbs, 2d row 14, 3d row 20, 4th row 25, 5th or outside row 32.

If planted 7 inches apart, the first center row would require 8 bulbs, 2d row 12, 3d row 17, 4th row 21, 5th or outside row 26.



BED OF HYACINTHS.

Choice of colors: Red, crimson, white, pink, light blue, dark blue and yellow.

Price of 100 Hyacinths . . . \$5.00 } Purchaser to pay
" " 84 " . . . 4.25 } transit.

TULIPS. EARLY SINGLE FLOWERING.

FOR the ornamentation of the conservatory and sitting-room during the winter and spring months, the Tulip stands unrivalled, both as regards its rich and diversified colors, easy culture, and accommodating habits. Like the Hyacinth it will thrive in almost any soil or situation, and under almost any circumstances.

For out-of-doors, plant in October and November, and even in December, should the weather be open and favorable, about 4 to 6 inches apart, according to the size of the bulbs; the crown of the bulbs should be 3 or 4 inches under the surface. The same soil, etc., as for Hyacinths will suit them well. They should be protected during severe weather by branches of evergreen, or covering of straw or leaves about 3 inches thick.

Tulips are delivered free in United States at the single and dozen price, but by the hundred purchaser pays transit.

EXTRA EARLY DUC VAN THOLL.

	Doz.	100.
Single Red, bordered with yellow.....	\$0 20	\$1 00
Double Red, very double, red and yellow.....	20	1 00
Gold Striped, new and beautiful.....	15	1 00
Rose, satiny rose.....	30	1 75
Scarlet, brilliant scarlet.....	15	1 00
Vermilion, very brilliant.....	20	1 25
Yellow, bright yellow.....	40	2 75
White, clear white, fine.....	40	2 50

Those marked D grow about 6 to 7 inches. Those marked M grow about 8 to 9 inches. Those marked T grow 10 inches.

	Doz.	100.
D Artus, scarlet, fine bold flower for forcing.....	\$0 20	\$1 00
Belle Alliance, brilliant scarlet, large flower, sweet scented.....	25	1 50
D Bizard Pronkert, red, with yellow.....	25	1 50
D Bride of Haarlem, red and white, striped; one of the finest in cultivation.....	50	4 00
D Brutus, bright orange-crimson, with small golden margin, very showy.....	20	1 00
M Canary Bird, clear, rich golden-yellow, excellent for early forcing.....	35	2 25
M Chrysolora, golden-yellow, extra fine, is the best yellow Tulip for out-doors.....	30	2 00
D Cottage Maid, white, bordered with pink.....	40	2 50
M Couleur Ponceau, rosy crimson and white.....	15	1 00
M Crimson King, bright crimson, easily forced.....	15	1 00
D Duc d'Orange, beautiful yellow and orange.....	20	1 25
M Duchesse de Parma, bronzy-crimson, banded yellow.....	20	1 25
M Dusart, dark scarlet, a grand flower, very robust, unsurpassed for beds.....	40	2 50
M Eldorado, brilliant red, splendid for forcing.....	40	2 50
M Grootmeester van Maltha, dark crimson, feathered white.....	40	2 50
D Jacht van Delft, fine white.....	20	1 00
D Joost van Vondel, deep cherry-red, with white pencillings, one of the largest Tulips.....	25	1 50
D Joost van Vondel, pure white, largest and finest white Tulips in existence.....	15 cents each	1 50
T Keizer-Kroon, red, with broad yellow edge, large and exceedingly effective.....	25	1 50
M L'Immaculee, pure white, very early and fine, excellent for forcing.....	20	1 00
M La Reine (Queen Victoria), white, slightly tinted rose, excellent for bedding or forcing.....	25	1 50
M Mon Tresor, pure golden yellow, a grand variety.....	45	3 00
M Ophir d'Or, a large flower of deep, rich yellow, the finest yellow grown.....	50	3 50
T Pottebaker, yellow, bright canary-yellow.....	49	3 00



BED OF TULIPS.

	Doz.	100.
T Pottebaker, white, pure white, fine, large and showy.....	\$0 35	\$2 50
T Pottebaker, scarlet, bright scarlet, very large and fine flower.....	30	2 00
T Prince of Austria, glittering orange-scarlet, fine for forcing, sweet-scented.....	40	3 00
D Proserpine, very fine, glossy, crimson-pink, large Tulip. This very striking variety is unique in color, forces easily, may be had in bloom in December.....	40	3 00
M Queen Victoria (see La Reine).....		
D Rembrandt, scarlet, early, large, superb.....	40	2 50
D Rose Gris de Lin, very fine, bright pink. This is the best of all pinks.....	40	2 50
D Rose Mundi, white, shaded with deep rose.....	30	2 00
D Rose Luisante, deep rose, extra fine.....	60	4 50
M Snowball, pure white.....	25	1 50
D Standard Royal Silver, white, feathered with rosy crimson, very fine.....	25	1 50
T Thomas Moore, orange.....	35	2 25
D Van der Neer, the finest of all violets.....	25	1 50
D Vermilion Brilliant, glossy, bright vermilion, magnificent, extra fine for pots and bedding.....	40	3 00
D Wouwerman, violet, very large flower, beautiful color.....	25	1 50
D Yellow Prince, bright yellow, scenting like Tea Roses, is one of the best yellow Tulips for forcing.....	30	2 00

EARLY SINGLE Tulips in Mixture.

	Doz.	100.	1,000.
Single, Mixed, in shades of red.....	\$0 25	\$1 00	\$9 00
" " " " white.....	25	1 00	9 00
" " " " yellow.....	25	1 00	9 00
" " all colors mixed.....	20	50	7 50
Arlington, finest mixed, from named sorts.....	30	2 00	18 00

LATE FLOWERING SINGLE TULIPS.

IN some locations these are known as the "May-flowering Tulip," and closely follow the season of the early single sorts. They are largely cultivated on account of their individual beauty, being possessed of great variation of form and color, the latter being rich and distinct. A few of these ought to be in every collection, as their stately form never fails to attract attention.

	Doz.	100.
Darwin. These new late flowering Tulips have attracted much attention in the past three years, and have been a success wherever grown and exhibited at Horticultural shows, both in this country and Europe. The flowers are single, of elegant form, and exceedingly bright colors.....	\$0 30	\$2 00
Breeders. These late flowering Tulips have immense flowers of solid colors, such as scarlet, crimson, violet, etc., choice mixed.....	30	2 00
Bizarres, grand and rich flowers of perfect shape, having a yellow ground color, painted, feathered, or striped with crimson, purple or white, choicest mixed varieties.....	25	1 25
Byblomens, magnificent flowers, the perfection of form, have a white ground color, with beau-		

	Doz.	100.
tiful stripes and markings of crimson, pink, and scarlet or rose; mixed varieties.....	\$0 25	\$1 50
Gesneriana Hortensis, the tallest, largest flowered, and showiest of all Tulips for bedding out in masses, it deserves to be largely grown. Height, two to three feet. Flowers of enormous size, on strong, graceful stems, and the most durable of all Tulips, as it holds its beautiful color and keeps perfect several weeks, flowering in May. Color, rich crimson scarlet, with glittering blue-black center.....	25	1 75
White Swan, grows about twelve inches high. The flowers are extra large and of pure silky white.....	25	1 75
Finest Mixed Varieties.....	20	1 25

...TULIPS EARLY DOUBLE FLOWERING....

	Doz.	100.
<i>M</i> <i>Alba Maxima</i> , a pure white.....	\$0 40	\$3 00
<i>T</i> <i>Couronne de Roses (Crown of Roses)</i> , a magnificent Tulip of a rich dark satiny-rose carmine color, shaded cerise, large and very double.....	60	4 25
<i>D</i> <i>Duc van Tholl</i> , red and yellow, dwarf, very early	20	1 00
<i>D</i> <i>Duke of York</i> , dark crimson, bordered silvery-white.....	25	1 50
<i>M</i> <i>Gloria Solis</i> , very large, scarlet, deeply edged with bright yellow.....	25	1 50
<i>Helianthus</i> , yellow and scarlet, extra fine.....	30	1 75
<i>M</i> <i>Imperateur Rubrorum</i> , rich crimson-scarlet, the finest of all scarlets.....	35	2 50
<i>D</i> <i>La Candeur</i> , pure white, very full and large....	20	1 25

	Doz.	100.
<i>D</i> <i>Murillo</i> , beautiful pink and white, the best double pink for forcing.....	\$0 50	\$3 50
<i>D</i> <i>Le Blazon</i> , a beautiful variety, of delicate rose, shaded and striped with white.....	35	2 50
<i>D</i> <i>Purple Crown</i> , dark crimson, Maroon, velvety and fine.....	25	1 50
<i>M</i> <i>Rex Rubrorum</i> , bright crimson-scarlet, very large and showy.....	35	2 50
<i>T</i> <i>Rosina</i> , splendid rosy pink.....	35	2 50
<i>D</i> <i>Tournesol</i> , bright red and yellow. The best Double Tulip for forcing.....	35	2 50
<i>D</i> <i>Tournesol</i> , bright golden-yellow, very large and showy, fine for forcing.....	60	4 00
<i>D</i> <i>Titian</i> , dark crimson-scarlet, edged with golden-yellow, very fine.....	25	1 50



GREIGI TULIP.

EARLY DOUBLE TULIPS IN MIXTURE.

	Doz.	100.	1,000.
Choice Mixed, in shades of red.....	\$0 25	\$1 00	\$9 00
" " " " " white.....	25	1 00	9 00
" " " " " yellow.....	25	1 00	9 00
" " " " " all colors.....	20	90	7 50
Arlington, finest mixed, from named sorts.....	30	2 00	18 00

LATE DOUBLE TULIPS.

	Doz.	100.
<i>T</i> <i>Belle Alliance</i> , white, feathered with crimson.....	\$0 30	\$1 75
<i>M</i> <i>Mariage de ma Fille</i> , large magnificent variety, white, crimson striped, one of the finest late Double Tulips.....	50	3 50
<i>M</i> <i>Pæony Red</i> , very deep red, with yellow stripe.....	25	1 50
<i>Pæony Gold</i> , yellow.....	30	1 75
<i>T</i> <i>Blue Flag</i> , violet-blue, very distinct, tall and late.....	30	1 75
<i>D</i> <i>Yellow Rose</i> , splendid golden yellow, very large flower and showy, fine for forcing, sweet scented.....	25	1 75
Late Double Tulips in extra fine mixed varieties.....	20	1 00

VARIOUS SPECIES ODD AND NOVEL TULIP.

	Each.	Doz.		Each.	Doz.
<i>Cornuta</i> (Chinese), yellow striped, red petals like spiral horns, curiously twisted.....	\$0 05	\$0 50	ingly handsome. Foliage oddly spotted with maroon. (See cut.).....	\$0 10	1 00
<i>Elegans</i> , rich carmine, splendid.....	05	50	<i>Oculis Solis</i> (Sun's Eye), fiery red, with black center or eye, beautifully and showy.....	05	50
<i>Florentina</i> (Sweet Scented), clear yellow, excellent for pot or garden culture. The flowers emit the odor of violets.....	\$2.00 per 100	05	30	05	50
<i>Greigi</i> (The Queen of Tulips), flowers very large, of brilliant orange-scarlet, bottom of the cup deep black. Antherz pure yellow and exceed-		30	<i>Retoflexa</i> , clear yellow, petals long and pointed and gracefully recurved.....	05	50
			<i>Viridiflora</i> , immense flowers of green, with white margin.....	05	40

PARROT OR DRAGON TULIPS.

THE Parrot Tulip has a singularly picturesque appearance, the flowers are large and the colors brilliant, so that when planted in flower borders they produce a striking effect.

	Doz.	100.
<i>Constantinople</i> , red, streaked with orange.....	\$0 30	\$2 00
<i>Luteo</i> , yellow.....	30	2 00
<i>Markgraaf</i> , yellow and orange.....	30	2 00
<i>Monstre Rouge</i> , large red, late; the finest of all Parrot Tulips	30	2 00
<i>Perfecta</i> , yellow, spotted red.....	30	2 00
Finest Mixed Varieties	20	1 00

TULIPS IN BEDS.

The Bulbs we supply here are not the common mixed, but selected from the named varieties and put in at a reduced price.

FOR the convenience of our customers we have given the number of bulbs required for a few of the most popular sized beds. A bed 7 feet square of Tulips arranged in four colors similar to the Hyacinth bed on page 4 would require 68 bulbs for each division, if planted 5 inches apart, or 272 bulbs in all.

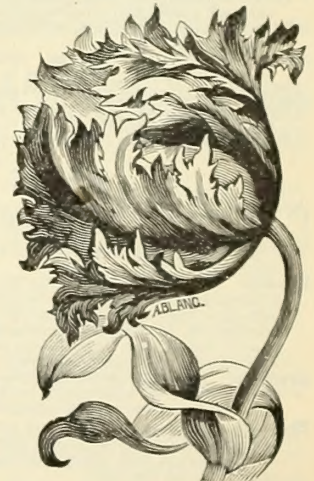
Choice of the following colors: Red, crimson, white and pink, white, yellow.

Price for the 272 Bulbs, \$4.00, purchaser paying transit.

A bed 18 feet in circumference or 6 feet across, if planted 5 inches apart and divided in 4 parts, required a total of 200 bulbs, or 50 bulbs for each division.

Choice of the following colors: Red, crimson, white and pink, pure white or yellow.

Price for the 200 bulbs, \$3.00, purchaser paying transit.



PARROT TULIP

NARCISSUS...

...OR DAFFODILS

THE Narcissus has more points of real merit than any other hardy plant, and until recently the possibilities of this family have not been brought out. The florists now use these in large quantities. They are equally well adapted for the conservatory, sitting-room or flower-garden, so that however limited the collection of plants may be, if there is not in it a fair proportion of this delightful flower it will be deficient of a most essential ornament. The culture is the same as the Hyacinth. See page 3.

We deliver in the United States all Narcissus free at single and dozen price. By the hundred purchaser pays transit.

☉ SINGLE FLOWERED ☉



PRINCEPS.

ALL YELLOW VARIETIES

	Each.	Doz.	100.
Ard Righ (<i>Irish King</i>). A magnificent daffodil; pure yellow; trumpet deep yellow, widely reflexed and fringed.....	\$0 10	\$1 00	\$6 00
Barri Conspicua . Canary yellow, with deep golden cup, richly edged with orange scarlet. The finest of yellow varieties.....	10	85	6 00
Cynosure . Light yellow, with deep yellow broad cup; extra large flowers about 3½ inches across. An excellent variety for either forcing or open ground culture..	04	30	2 00
Emperor . Entire flower of the richest yellow; trumpet of immense size. Excellent for cutting. One of the finest daffodils in cultivation.....	10	1 00	
Figaro . Lemon yellow; cup deep rich golden yellow edged with redish orange. A splendid variety.....	04	40	2 50
Golden Spur . One of the grandest daffodils, with extra large, bold, rich yellow flowers, foliage very broad and striking. It is of unusually robust habit and unsurpassed for gardens, pots or forcing..	10	1 00	6 00
Henry Irving . A magnificent flower, with long, beautifully frilled trumpet, nearly two inches wide at the mouth, of rich golden yellow color. The petals of the perianth are very wide, overlapping, color bright yellow; a most perfect flower and received a first-class certificate.....	10	1 00	6 00
Incomparable . Large primrose perianth, sulphur crown.....2 for 5 cents		20	1 50
Maximus, or Hale's Beaten Gold . Very large flower of rich yellow, remarkable for an elegantly twisted perianth; trumpet deep golden, large and well flanged,	10	1 00	6 00
Obvallaris , the famous "Tenby Daffodil." Elegantly formed medium-sized flower of rich yellow; one of the earliest and best for forcing.....	05	50	3 00
Rugifolius . Similar to the "Emperor," but earlier and smaller flower.....	05	50	3 00
Sir Watkin (<i>Welsh Giant Daffodils</i>). The largest variety grown. These immense flowers sometimes measure 5 inches in diameter. Perianth rich sulphur, very broad and imbricated. Cup large and deep yellow, tinted with orange.....	10	1 00	8 00

	Each.	Doz.	100.
Trumpet Major . Flower large and almost of a uniform deep golden; highly prized as an early forcing sort...3 for 10 cents		\$0 30	\$2 00

YELLOW AND WHITE VARIETIES

Empress . A beautiful large variety. Perianth white and of great substance, trumpet rich yellow. A rare beauty... \$0 10	1 00	8 00	
Grandee . One of the largest flowers, with broad, snow white petals and a rich yellow trumpet beautifully imbricated. It is a grand flower.....	12	1 25	9 00
Horsfeldi (<i>the Queen of the Daffodils</i>). Very large flowers of pure white, with rich yellow trumpet. Very stately and beautiful, and one of the most elegant for ladies' corsage wear. This magnificent flower was raised by a Lancashire weaver, John Horsfield, and it has made him famous.....	08	90	6 00
Nelsoni . Very large flowers. Perianth of creamy white, with broad and fluted golden yellow cups. Excellent for cutting.....	10	1 00	6 00
Princeps . This is one of the most popular winter flowering and forcing varieties grown; flowers large, perianth sulphur, with an immense rich yellow trumpet.. 3 for 10c.	30	2 00	
Pseudo . ("Lent Lily.") Petals white with yellow trumpet. Early and sweet-scented. Excellent for borders.....	04	30	1 75
Scoticus (<i>the Garland Lily</i>), or "large flowering Lent Lily." Perianth white, trumpet yellow, full and elegantly flanged. Splendid for forcing.....	05	50	3 00
Stella . A popular early variety. Perianth white and slightly twisted, with distinct yellow trumpet. Very beautiful. .3 for 10	20	1 50	

ALL WHITE VARIETIES

Elegans . Silvery white perianth, primrose cup passing to white. One of the best,	04	20	1 50
Circe . White, cup canary-yellow changing to white.....	04	20	1 50

The entire collection of Narcissus on this page, 23 varieties, delivered anywhere in United States for \$1.50.



POLYANTHUS NARCISSUS.

The collection of 10 varieties of Polyanthus Narcissus delivered anywhere in United States for 60 cents.

POLYANTHUS NARCISSUS

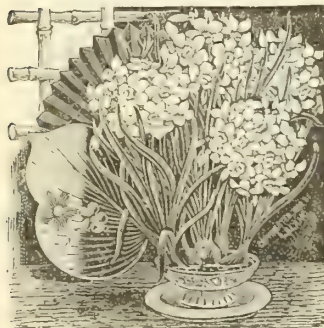
	Each.	Doz.	100.
Bathurst. Yellow.....	\$.08	\$0 60	\$4 00
Bazelman Major. Extra large, white and yellow; the largest and finest of all the Polyanthus Narcissus.....	20	2 00	15 00
Gloriosa. Pure white, with primrose-colored cup; immense truss. Very early. Excellent for forcing.....	05	40	3 00
Grand Monarque. Flowers large white, with lemon yellow cup. Can be grown in water with very good success.....	05	40	3 00
Grand Soleil d'Or. A great favorite for bedding. Rich yellow, with orange-red cup. Very handsome.....	05	40	3 00
Newton. A very free bloomer. Yellow, with orange cup.....	05	40	3 00
Paper White Grandiflora. Pure white individual flowers; very large. Is very early and excellent for forcing.....	05	25	2 00
Roman. White, with double citron-colored cups. Early and one of the best for forcing.....	05	20	1 25
Staten-General. Creamy-white, with yellow cup, White Pearl. Pure white satiny flowers; very large truss.....	05	35	2 50
Mixed.....	08	50	4 00
	03	25	1 50

Hoop Petticoat Narcissus

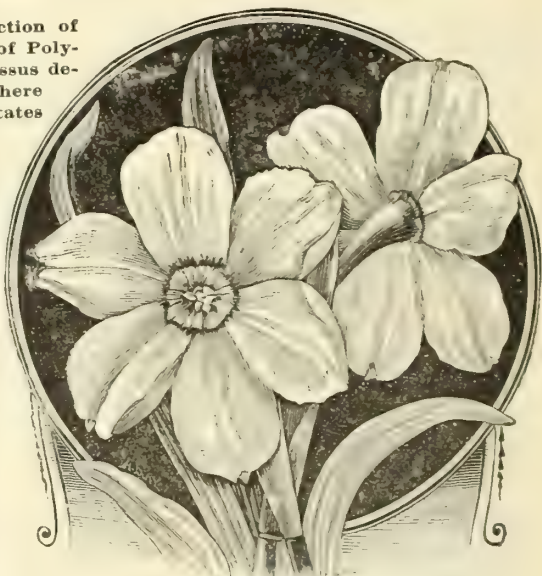
	Each.	Doz.	100.
Bulbocodium. The flowers are rich, golden yellow and exceedingly pretty. It is excellent for pot culture as well as edgings, and will bear from six to ten flowers to each bulb.....	\$0 08	\$0 90	\$6 00
Clusii (Monophyllus). Very early blooming flowers, pure white. If potted in September these will bloom at Christmas.....	05	75	5 00

True Poet Daffodils

	Doz.	100.	1000.
Poeticus (the True Poet's Narcissus. Pure white flowers, with orange cup, edged with crimson; splendid for cut flowers.....	2 for 5 cents.	\$0 15	\$0 75 \$6 00



CHINESE NARCISSUS.



NARCISSUS POETICUS ORNATUS.

	Each.	Doz.	100.
Poeticus Ornatus. (See cut.) The improved "Poeticus," large, beautifully formed, pure white flowers with saffron cup tinged with rosy scarlet, a magnificent cut flower; very early.....	3 for 10 cents	\$0 25	\$1 50

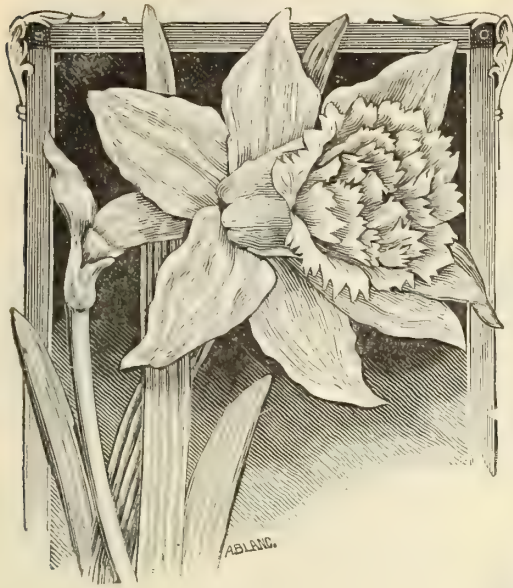
CHINESE NARCISSUS (Sacred Lily of China)

The "Shui Sin Far," "Joss Flower," or "Flower of the Gods," etc., as it is called by the Celestials, is a variety of Narcissus, easily grown and blooms freely, bearing a very sweet-scented flower of silvery-white, with golden-yellow cups.

Use shallow dishes about three inches deep, into which put about one inch of gravel. Set the bulbs on this and fill in with small stones, to keep them upright, and keep the dish full of water. It is not necessary to put the bulbs in the dark, but if kept shaded until the leaves begin to grow better results may be obtained. Although they will succeed in any ordinary room, it is necessary for them to be kept away from gas, as it causes the flowers to blast.

Price 12 cents each; \$1.25 per dozen. If by express 10 cents each; \$1.00 per dozen.

The entire collection of Narcissus on this page, 15 varieties, delivered anywhere in United States for 90 cents.



NARCISSUS DOUBLE GARDEN

(DAFFODILS)

All bulbs are delivered free in the United States at the single and dozen prices.

Under this head are some remarkably showy, sweet-scented, spring flowering favorites, which are especially deserving of notice on account of their easy culture, early flowering and generally effective appearance.

	Each.	Doz.	100.
Albo pleno odorato, pure white, double, very fragrant	3 for 10 cents	\$0 25	\$1 25
Incomparable (Butter and Eggs), yellow and orange. (See cut.)	3 for 10 cents	25	1 25
Orange Phoenix, orange and buff	\$0 05	40	3 00
Sulphur Crown, very double, silvery-white and sulphur	15	1 25	8 50
Fine mixed varieties	3 for 10 cents	25	1 00

... VON SION ...

(TELAMONIUS PLENUS)

This is the grand old "Double" yellow Daffodil, and should be in every garden. Fine for massing; also one of the very best for house culture in pots. Large double, yellow trumpet flowers. 3 for 12 cents; 40 cents per dozen; \$2.50 per 100.

... JONQUILS ...

Excellent for early blooming, charming large golden and deliciously odoriferous flowers, freely produced; of the finest effect either in the garden, greenhouse or conservatory. See cut.

VON SION.

PRICE OF JONQUILS.

	Each.	Doz.	100.
Campanelli, very large, rich-yellow flowers, four to six on a stem; excellent for forcing	2 for 5 cents	\$0 20	\$1 00
Single (sweet-scented), golden yellow; a well-known favorite	2 for 5 cents	15	75
Double (sweet-scented), deep golden-yellow flowers, exceedingly fragrant; excellent for forcing	6 cents each	50	4 00
Rugulosus (The Giant Jonquil), very large yellow and fragrant	3 for 10 cents	25	1 25

... AGAPANTHUS ...

(The Great African Lily.) Ready in November.

These are noble ornaments on lawns, in pots or tubs, on terraces or piazzas, or for the decoration of the greenhouse. Foliage luxuriant and graceful; flowers borne in clusters of twenty to thirty and measure fully a foot across. The flower stalks frequently attain a height of three feet, the flowers opening in succession for a long period during the summer and autumn.

	Each.	Doz.
Umbellatus, old favorite; flowers bright blue	\$0 20	\$2 00
Alba, pure white	25	2 50



NARCISSUS INCOMPARABLE.

ALSTROMERIA (Peruvian Lily). Very robust and abundant blooming, with large lily-like flowers of great beauty, borne in clusters during the summer. They are especially adapted for cutting, being of much substance and lasting in perfection for a long time. Excellent for pot culture. Two to four feet.

Mixed varieties (ready in November), 10 cents each; \$1.00 per dozen.

ANOMATHEAC CRUENTA The profusion with which the bright rosy-carmine flowers are borne and the long period they continue in flower make them very popular. Excellent for pot culture or blooming out of doors, although in the latitude of New England they need protection. Height 3/4 feet. 3 for 10 cents; 30 cents per doz.; \$1.75 per 100.

ANTHOLYZA resembles somewhat the Gladiolus. In New England they are not hardy, but can be grown in cold frames or planted out in the spring—flowering from July to September. The tall spikes of blooms render them very effective for grouping in beds or shrubberies. The scarlet, black, green, etc., flowers make them very effective. 10 cents each; \$0.75 per dozen.



ALLIUMS

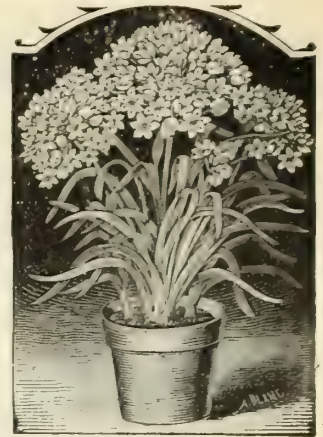
Are grown extensively for their ornamental qualities, being hardy, showy, and blooming for a considerable length of time.

Allium Neapolitanum (see cut) is amongst the earliest and grandest of winter bloomers. Its flower stems are 2 inches high, supporting a large cluster of delicate white starry flowers; sure to bloom splendidly in any window. 3 for 10 cents; 25 cents per dozen; \$1.25 per 100.

Moly (Golden Allium), perfectly hardy, growing one foot high and covered with large clusters of golden flowers. Most desirable for the garden. 3 for 10 cents; 25 cents per dozen; \$1.25 per 100.

AMARYLLIS

A beautiful class of plants, with large, drooping, bell-shaped, lily-like flowers, varying in color from the richest crimson to pure white, striped with crimson or scarlet. They are of the easiest possible culture, and few flowers give a better return in the shape of lasting and showy bloom for the limited amount of labor involved in their cultivation. With a very small stock of bulbs they can be had in flower at almost any season of the year by starting them in succession. A compost consisting of equal parts of good turfy loam, leaf-mould, well-decayed manure and sharp sand answers best. From the time they are started, water



ALLIUM NEAPOLITANUM.

should be given very carefully, and not in too great quantities. When the foliage begins to decay, water should be gradually withheld until it has quite died down, when the bulbs may be stored away (in the pots), in any dry, cool place, safe from frost, until their flowering season comes again. The evergreen varieties, which do not die down, should be kept in a growing state, and shifted into larger pots as they require it.

Amaryllis (Zephyranthes) atamasco. Pink and white, variable, showy for border, 3 for 10 cents; 25 cents per dozen.

Equestre (Barbadoes) Lily. Broad petals of a soft salmon-scarlet color, marked in the center with white bars, which radiate from the white throat. 15 cents each; \$1.50 per dozen.

Formosissima (Jacobaeae Lily). Beautiful trumpet-shaped flower of a rich, dark scarlet; free blooming; forces well, and can be grown in water like Hyacinths 10 cents each; \$1.00 per dozen.



BELLADONNA MAJOR.

Johnsonii, a very popular sort, and one of the best of the Amaryllis for general culture; large flowers of fine crimson color, striped with white. 35 cents each; 3 for \$1.00, postpaid.

Vittata. These magnificent varieties produce a free supply of flowers of the most striking tints, and are justly esteemed the most beautiful of the Amaryllis family. We offer red or white ground hybrids, all beautifully striped and flaked, 75 cents each.

VALLOTA PURPUREA

(Scarborough Lily.)

(See cut.) This plant is closely allied to and was at one time recognized as a member of the Amaryllis family. It is evergreen and one of the most beautiful and desirable plants grown, producing large, crimson-scarlet, lily-like flowers in heads of five or six blooms each, which remain a long time in perfection. Large bulbs, if kept growing, will flower several times during the year. As easily cultivated as the Calla Lily. Price, 30 cents each; \$3.50 per dozen.

C. L. ALLEN'S NEW BOOK ON BULBS. Handsomely Illustrated, Cloth. 12mo. Price, Postpaid, \$2.00.

This is the most practical, inexpensive work on Bulbs and Tuberous-rooted plants we have seen. It gives their history, description, methods of propagation, and complete directions for their successful culture in the garden, dwelling and greenhouse.



ANEMONES *



ANEMONE FULGENS.

This highly ornamental class of easily cultivated hardy plants is becoming better known and more popular each succeeding year, and should occupy a conspicuous place in every garden. They are well adapted for either pot or border culture, and are unsurpassed for variety and richness of color. Plant in October or November, or as soon as the ground can be worked in the spring, and during winter protect with straw or leaves.

Double Poppy Flowered. (*Coronaria fl. pl.*) The flowers of this class are very double, and are surrounded at the base with large guard petals resembling a double Hollyhock. For cutting purposes they are grand, and we know of no class of plants with more gorgeous colors, two or three colors usually being blended in the flowers of each variety. Mixed colors, 3 for 12 cents; 25 cents per dozen; \$1.50 per 100.

Single Poppy Flowered. (*Coronaria*) These handsome Single Anemones have large, beautiful, saucer-shaped, poppy-like blossoms, and during mild seasons, or in sheltered situations, are flowering continuously throughout the winter, spring and early summer. Mixed colors, 3 for 12 cents; 25 cents per dozen; \$1.50 per 100.

Fulgens. (See cut.) The rich, dazzling scarlet flowers and light, elegant growth, render it the most attractive flower of spring. It is invaluable for cutting, as it lasts a long time in water. 3 for 12 cents; 30 cents per dozen; \$2.00 per 100.

Fulgens fl. pl. A double flowering of the above. 5 cents each; 40 cents per dozen. \$3.00 per 100.

HARDY JAPANESE ANEMONE.

The large cup-shaped flowers are exceedingly attractive and numerous, remaining beautiful until frost. Grows from two to three feet high. Cannot be too highly recommended for fall blooming.

<i>Japonica Alba</i> , large, pure white	Each. \$0 20	Doz. \$2 00
<i>Japonica Rosea</i> , pink	20	2 00
Whirlwind, large, semi-double flowers	25	2 50



ARUM OR DRAGON FLOWER.

The Arums are remarkable and handsome plants, with fine foliage and curious inflorescence, more or less enclosed in a hooded spathe, which is generally richly colored and marked. They are hardy, and easily grown in any soil.

A. Sanctum (*Black Calla*) is strictly a winter bloomer, and will bloom no other time. Its flowers are enormous, fully a foot in length; color, clear coal black, so intense that it really shows a brilliancy, and as may well be imagined, it is a flower of the most striking oddity and beauty. The bulbs are large and should be potted in the fall, and when growth commences set in a window. After blooming the foliage will die down and the bulb should be kept dry for planting again in the fall. (See cut.) Price of large flowering bulbs, 15 cents each; \$1.50 per dozen.

A. Dracunculus (*Dragon Arum*). (See cut on first page.) Flowers one foot long, purple, red and black, blue; stem beautifully marbled, leaves handsome, resembling a small palm; a rapid grower, making a curious and ornamental pot plant. 15 cents each; \$1.50 per dozen.



ARUM SANCTUM (BLACK CALLA).

CALLAS

White (*Ethiopica*). The well-known Calla Lily is one of the best plants for parlor culture. Its growth is stately, the flower showy, exceedingly fragrant, and freely produced. A commendable feature is that it effectually resists all the injurious effect which gas and furnace heat generally inflict on our floral pets. The requisites for successful culture are rich soil, plenty of water and pot room. Extra large, 25 cents each; \$2.50 per dozen.

Black Calla (*Arum Sanctum*), is strictly a winter bloomer, and will bloom no other time. Its flowers are enormous, fully a foot in length; color, clear coal-black, so intense that it really shows a brilliancy, and as may well be imagined, it is a flower of the most striking oddity and beauty. The bulbs are large and should be potted in the fall, and when growth commences set in a window. After blooming the foliage will die down and the bulb should be kept dry for planting again in the fall. (See cut.) Price of large flowering bulbs, 15 cents each; \$1.50 per dozen.

Little Gem. (See cut.) Dwarf; grows 10 to 15 inches high, and almost constantly in bloom. 15 cents each; \$1.50 per dozen.

Spotted Leaf Calla (*Richardia Alba Maculata*). This plant is always ornamental, even when not in flower, the dark green leaves being beautifully spotted with white; in other respects the plant is the same as the old favorite white Calla, excepting being of a smaller habit. In addition to its usefulness as a pot plant it makes a fine thing for planting in the garden in the summer, being very effective. 15 cents each; \$1.50 per dozen.



LITTLE GEM CALLA AND CALLA ETHIOPICA.



BABIANA.

BABIANA.

The flowers are of rich, self-colors, varying in color from the richest carmine to the brightest blue in the same flower. The leaves are of dark green covered with downy hair. Not hardy in New England, but will live when protected by cold frame. Five or six bulbs in a five-inch pot make a very attractive pot plant. Mixed varieties. 5 cents each; 50 cents per dozen; \$3.50 per 100.



BRODIAEA.

BRODIAEA.

The flowers are borne on stems one to two feet high, in clusters of red, white or blue tubular flowers. Easily forced. Can be grown in greenhouse or cold frame. If planted out in spring in clumps or masses, they flower very freely in June or July.

Mixed varieties. 3 for 10 cents; 30 cents per dozen.

Crocus bulbs we deliver free in the United States at dozen and 100 price.

CROCUS.

THE FIRST **x x x** FLOWERS OF SPRING.

This, as is well known, is one of our earliest spring flowers; and producing, as all the varieties do, dense masses of rich colored blossoms, and is beyond question the most effective of its season, and can hardly be too liberally planted in every garden. The more thickly they are planted, the greater is the effect produced. With ordinary care, the Crocus will bloom freely in any sitting-room window.

Culture in Flower Borders or Beds. Plant in the open ground in October or November. Bulbs should be covered from two to three inches, and not more than two inches apart. For edging borders and beds the Crocus is always exceedingly useful. A splendid effect may be produced by scattering the bulbs broadcast upon lawns and planting under the turf, wherever they fall.

Culture in Pots, Vases, Baskets, etc. For pot culture use good, rich, sandy soil, and secure perfect drainage, a liberal supply of water being necessary during the blooming season. Planted in china bowls, saucers, etc., filled with moss or sand, drainage is unnecessary; but on no account should the moss or sand ever be allowed to get dry. Treatment same as recommended for Hyacinths in sand or moss.



CROCUS.

Choice Named Varieties Dutch Crocus

	Doz.	100
Albion, extra fine, striped.....	\$0 12	\$0 75
Baron Brunow, bright purple, free blooming.....	12	75
Carolina Chisholm, splendid, white.....	12	75
La Majestueuse, striped, variegated.....	12	75
David Rizzio, dark purple.....	12	75
Mont Blanc, magnificent, large, white.....	12	75
Madame Mina, light blue, striped.....	12	75
Mammoth Yellow.....	12	75
Non Plus Ultra, purple, with white top.....	12	75
Prince Albert, purple.....	12	75
Queen Victoria, white.....	12	75
Sir Walter Scott, white, striped with purple, finest of all striped Crocus.....	12	75
Mixed, from above varieties....	10	40

MIXED CROCUS Blue, Striped, White and Yellow, 10 cents per dozen; 50 cents per 100; \$4.00 per 1,000. All colors, mixed, 10 cents per dozen; 40 cents per 100; \$3.50 per 1,000.

Colchicum or Autumn Flowering Crocus.

Colchicum Autumnale (Meadow Saffron). The flowers comprise many shades of white, purple, rose, striped, etc., coming in bloom in the autumn. Make very effective and handsome hardy plants, especially for borders. Mixed sorts, 5 cents each; 50 cents per dozen.

We will deliver anywhere in United States one dozen each of the above 12 varieties of Crocus for \$1.50.



BED OF CROCUS.

CROWN IMPERIALS

We might say much in praise of this old-fashioned spring blooming plant, with its cluster of pendant, bell-shaped flowers surmounted with a tuft of green leaves, but it is so well known, having been cultivated nearly three centuries, and may be met with almost everywhere; we may, however, just notice that it is, perhaps, the most useful spring plant that we have for relieving the monotony of the flower borders, and imparting a lively appearance to shrubberies. They grow freely in any common, well-drained soil.

	Each.	Doz.		Each.	Doz.
Aurora, orange-red.....	\$0 15	\$1 75	Single Yellow, very large.....	\$0 20	\$2 00
Crown upon Crown, several whorls of flowers, one above the other.....	20	2 00	Sulpherino, orange, slightly striped red.....	25	2 50
Single Red.....	20	2 00	Mixed.....	12	1 25

GIANT CYCLAMEN.

Among the many floral pets that enliven our homes throughout the winter and early spring none are more charming than the Cyclamen. Its neatness of foliage and flower, its brilliant and varied colors, and its duration of bloom, render it desirable for parlor culture. Plant during September and October in a mixture of turfy loam, leaf-mould and sand, in equal parts. Do not cover the bulb; merely press it into the soil, and give a slight watering. Keep them shaded, and water sparingly until they start growing, then treat as other house plants.

Rose, Dark Crimson, Pure White, White with Rose Eye. Price of any of 4 varieties, 25 cents each, or \$2.50 per dozen, or the set of 4 for \$1.00. Giganteum Mixed, 20 cents each; \$2.00 per dozen.



CYCLAMEN.

ERYTHRONIUM GRANDIFLORA.

(Dog's Tooth Violet.)

Although called "Dog's Tooth Violet," it does not in any way resemble a violet, nevertheless is a beautiful genus of the liliaceous plants found in the Northwestern States, and grows abundantly in the Rocky Mountains. Is perfectly hardy, and succeeds best in moist soil or in partial shade. They succeed finely grown in pots for flowering in winter months. The flowers are yellow, and borne on stems from 12 to 18 inches high, with six to twelve flowers on a stem. 3 for 10 cents; 30 cents per dozen.

DECENTIA or BLEEDING HEART.

Ready in November. Has dark green foliage and long drooping racemes of pink and white heart-shaped flowers. One of the most ornamental of spring flowering shrubs. 15 cents each; \$1.50 per dozen.



CHIONODOXA ("GLORY OF THE SNOW").

A valuable, hardy, early-flowering bulb, producing spikes of lovely azure blue flowers, with pure white centers. Those who know *SCILLA SIBERICA* will need no further description of this beautiful plant when we say the flowers and spikes are more than twice the size of that little gem.

Lucilia. (See cut.) Flowers of a brilliant sky-blue color, with white center. 3 for 10 cents; 25 cents per dozen; \$1.25 per 100.

Sardensis. A beautiful deep blue flower. 3 for 10 cents; 25 cents per dozen; \$1.25 per 100.

Gigantea. (New.) This new variety differs from all others of the family by its unusually large flowers of soft, lavender blue, with a conspicuous white center. It is perfectly hardy, and when grown in the house for winter flowering, it makes a beautiful effect. 3 for 10 cents; 30 cents per dozen; \$1.50 per 100.



CHIONODOXA LUCILIAE.

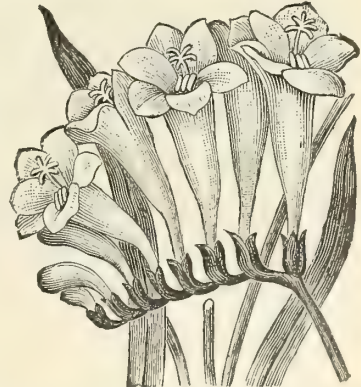
Subcordata Grandiflora. Milky white flower, nearly four inches across. Fragrant. 15 cents each; \$1.50 per dozen.

Variegata. Very fine fall blooming plant; leaves green and white flowers, purplish lilac. 15 cents each; \$1.50 per dozen.

FUNKIAS.

Day Lilies.

This handsome, hardy, bulbous plant makes a very attractive appearance when planted in clumps or masses, as the pure white and fragrant flowers are borne on stout stems above the bold, luxuriant foliage, and make an exceedingly striking effect.



FREESIA.

... FREESIA ...

For graceful beauty and exquisite fragrance, this important introduction rivals many an old-time favorite as a plant for parlor culture, for which it is particularly adapted. The flowers are borne on a slender, branching scape, somewhat spreading. The perfume is delicious, differing from the majority of strongly-perfumed flowers in that it is never objectionable. The culture is simple. The bulbs should be potted from August to November in any good soil of a sandy texture; water sufficient should be given to soak through, after which but sparingly until beginning to grow rapidly; then water freely and place in a sunny, temperate position, either in the house or conservatory. (See cut.)

Retracta alba, clear white, with yellow blotch on lower petal. 2 for 5 cents; 15 cents per dozen; \$0.75 per 100; extra large bulbs, 3 for 10 cents; 25 cents per dozen; \$1.50 per 100.



HELLEBOROUS NIGRE.

This most beautiful class of hardy herbaceous plants grows in almost any situation very freely, blooming early in the spring, and it grown in the house or in frames, will bloom during the Christmas holidays, and will continue during the winter.

Nigre. (See cut.) The true Christmas Rose, a great favorite for the house culture, producing as it does flowers in great profusion that are pure waxy white. 25 cents each; \$2.50 per dozen.

IRIS

JAPAN IRIS (DOUBLE).

Ready about the first of November.

Kämpferi. Descriptions cannot in any way do justice to the magnificence of these new Iris. They are unsurpassed. Let the weather be ever so severe they are not in the least affected. The prevailing colors are from deepest black-purple through various shades of blue, to the purest white. The individual flowers are of great size and heavy texture, flowering from the middle of June to the end of July.

Beauty. Light silvery-lilac, veined purple, blue dwarf large flowers.

Blue Jay. Dwarf, large flower, fine azure-blue veined and mottled white. Free bloomer. Extra fine.

Dinah. Light silvery-lilac, veined purple-blue, dwarf habit, large flower.

Mahogany. Very large; flower deep mahogany red.

Snow White. Tall and showy, with flowers of enormous size. Probably the most beautiful of all pure snow white, with large gold-banded center.

Orion. Tall and strikingly handsome; pure white, each petal having a wide border of lilac-red; very distinct.

P. C. de Rohan. Purplish blue, shaded violet, with red at center. Very large flower.

Robert Craig. Tall and very large; French white shaded with violet toward the center. Extra fine.

Price of any of the above, 25 cents each; \$2.50 per dozen; or the entire set of 8 varieties for \$1.75, delivered free in United States.

JAPAN IRIS (SINGLE).

Exquisite. Fine porcelain blue.

Shadow. Enormous wavy petals, dark indigo blue with peacock luster, and golden center. A grand sort.

Snowbound. Large pure white, with golden bands.

Souvenir. Lovely rose-pink, with delicate blue veins.

Violet Cap. Pure white, veined and suffused dark-blue.

Neptune. Reddish-gray, freely veined.

Mixed. Large flowered. 20 cents each; \$2.00 per dozen.

Price of any of the above single Iris, 25 cents each; \$2.50 per dozen; or the collection of 6 varieties for \$1.25, delivered free in United States.

IRIS SPANISH.

British Queen. Pure white, large flowering.

Prince of Orange. Extra large flower, yellow and clear lilac.

William I. The best yellow.

Vesuvius. Dwarf, dark orange, unique color.

Mixed Varieties. 3 for 10 cents; 20 cents per dozen; \$1.50 per 100.

Price of any of the above-named Spanish Iris, 5 cents each; 30 cents per dozen; \$2.00 per 100.

IRIS ENGLISH.

Florentina. Violet shaded with blue, with a yellow band. Fragrant. 10 cents each; \$1.00 per dozen.

Reticulata. Violet spotted with white, yellow and black. Fragrant. Extra early. 20 cents each; \$2.00 per dozen.

Susiana (Mourning Bride). Blush tinted, netted with dark lines, a remarkable looking and exceedingly handsome flower; succeeds admirably in pots. 20 cents each; \$2.00 per dozen.

FRITILLARIA...

They are invaluable for pot culture. **Finest mixed varieties, 3 for 10 cts.; 35 cents per dozen.**

GLADIOLUS... EARLY FLOWERING ...HARDY VARIETIES

...For Autumn Planting or Winter Forcing.

These beautiful, early-flowering Gladiolus are greatly prized on account of their blooming in June and July, if planted in the autumn in dry soil and protected with a covering of about six inches of straw, leaves or litter. (Ready in November.)

The Bride (Colvilli alba), a most beautiful, pure white variety; an excellent forcing quality. 2 for 5 cents; 20 cents per dozen.

Mixed, early flowering, hardy. 2 for 5 cents; 25 cents per dozen; \$1.25 per 100.

HELLEBOROUS... THE CHRISTMAS ...OR LENTEN ROSE

Pavonia. Pure white, petals blotched with bright blue. For pot culture three bulbs should be planted in a five-inch pot. 4 cents each; 50 cents per dozen.

Mixed. 3 for 10 cents; 25 cents per dozen; \$1.50 per 100.

IRIS GERMAN.

Germanica. They are perfectly hardy, thrive anywhere, grow and bloom luxuriantly, particularly if plentifully supplied with water, or if planted in moist situations or on the banks of ponds, etc.

Alveirea. Upright petals, light blue, falls rich, brilliant purplish-blue, flaked and feathered.

Honorable. Uprights bright deep-golden yellow, falls finely feathered and veined, yellow and maroon.

Mad Cheveau. Uprights pearly white, deeply feathered at edges of petals with sky-blue; falls white, delicately fimbriated blue; tall and very early. A grand variety.

Queen of the Gypsies. Uprights smoky lavender-bronze; falls feathered and veined rich plum, white, buff, etc.

Mixed. Choicest varieties. 20 cents each; \$2.00 per dozen.

Price for any of the above named sorts German Iris, 25 cents each; \$2.50 per dozen; or the collection of 4 varieties for 85 cents; delivered free in United States.



JAPAN IRIS.



GENERAL LIST OF LILIES...

...Embracing all the Most Desirable Varieties

FOLLOWING the description of each, we have indicated the height and time of flowering. None of the varieties will be ready for shipment until the last of October, except *L. Harrisii*, *Candidum* and *Longiflorum*, which are ready in September.

Auratum (*Golden-Banded Queen of Lilies*). This magnificent variety has become one of the standard favorites of the flower garden, and is considered by many the finest of all Lilies. The immense blooms, measuring nearly a foot in width when fully expanded, are produced in great profusion, and are deliciously fragrant. First size bulbs, 25c. each; \$2.50 per doz. Second size, 15c. each; \$1.50 per doz. (2 to 5 feet.) June to October.

Brownii. A magnificent variety, with fine large foliage; flowers very large, fine white inside, purple outside. The stamens are a rich chocolate color. 50 cents each.

Canadense. Our bell-shaped native Lily; drooping yellow and red flowers. 10 cents each; \$1.00 per dozen.

Canadense rubrum. Vigorous grower; flower rich dark-red. 15 cents each; \$1.25 per dozen. (3 feet.) July.

Candidum. The well-known hardy Easter Lily; snow-white, fragrant blossoms; one of the best varieties for forcing, or for garden culture, and an established favorite. 10 cents each; \$1.00 per dozen. (3 to 4 feet.) June.

Chalcedonicum. Intensely scarlet recurved blossoms, resembling a Turk's cap. 50c. each; \$5.00 per doz. (3 feet.) June.

Colchicum. Rich citron-color, spotted with black. 85 cents each; \$8.50 per dozen. (2 feet.) July.

Croceum. Large flowers of beautiful golden, slightly tinted scarlet. 15 cents each; \$1.50 per dozen. (3 to 6 feet.) July.

Elegans Erectum. Flowers erect and borne in clusters; orange, spotted scarlet. Very hardy. 15 cents each; \$1.50 per dozen. (1½ feet.) June and July.

Elegans incomparabile. A deep ox-blood crimson, slightly spotted with black. Very free and easily grown. 20c. each; \$2.00 per dozen.

Excelsum (*Isabellinum*). The stately form, beauty of color and delightful fragrance of this variety have made it a great favorite wherever known. It grows from 5 to 6 feet high; flowers of a delicate light-buff color. 40c. each; \$4.00 per doz. (4 to 6 feet.) June and July.

Giganteum. A magnificent variety of giant growth and very distinct. Color, creamy-white with purple throat. Frequently bears 12 to 15 large flowers, 5 to 6 inches long on stems 6 to 10 feet high. \$1.25 each. July.

LILIUM HARRISII (*The True Bermuda Lily*). The flowers are large, trumpet-shaped, pure waxy white, symmetrically formed, as beautiful and chaste as anything can be imagined, lasting from ten days to two weeks. The ends of the petals are recurved, giving it a very graceful appearance. Its fragrance is delightful. 1st size, 25 cents each; \$2.50 per dozen; 2d size, 15 cents each; \$1.50 per dozen.

Kramerii. One of the most lovely of all known Lilies, slender waving stems, about two feet high, with large flowers of a most beautiful rose color. 25 cents each.

Lancifolium Album. Pure white, and very fragrant. 20 cents each; \$2.00 per dozen.

— **Melpomene**. Very large flowers of rich blood-crimson, heavily spotted. 25 cents each; \$2.50 per dozen.

— **punctatum**. White, spotted and suffused with light rose. 40 cents each; \$4.00 per dozen.

— **roseum**. White, spotted with rose. 15 cents each; \$1.50 per dozen.

— **rubrum**. Rose, spotted with crimson. 15 cents each; \$1.50 per dozen.

Leichtlinii. A beautiful Japanese species, of neat and elegant habit; the flowers are pure canary-yellow, with crimson spots. 50 cents each. (3 to 5 feet.) August.

LONGIFLORUM. The well-known beautiful, snow-white fragrant Lily; fine for forcing, and handsome in the garden. 15 cents each; \$1.50 per dozen. Extra large, 25 cents each; \$2.50 per dozen. (1½ to 2 feet.) June and July.

Martagon (*Turk's Cap*). Purple. 20 cents each; \$2.00 per dozen. (2 feet.) June and July.

Superbum. The best of our native varieties; when grown in rich soil will frequently reach a height of 6 feet, and will produce upwards of thirty flowers of a yellowish-red color. 15 cents each; \$1.50 per dozen. July.

Tigrinum (*Tiger Lily*). Orange-salmon, spotted black. 10 cents each; \$1.00 per dozen. (3 to 5 feet.)

Tigrinum, fl. pl. (*Double Tiger Lily*). This is a plant of stately habit, growing from 4 to 6 feet high; foliage dark green, very long, bearing an immense number of double, bright orange-red flowers, spotted with black. 15 cents each; \$1.50 per dozen. (3 to 5 feet.) August.

Tigrenum Splendens (*Improved Tiger Lily*). Very large flowers, orange-red, spotted with black. Stems a polished black. 15 cents each; \$1.50 per dozen. (3 to 5 feet.) August.

Tenuifolium. One of the most charming of all Lilies. Perfectly hardy, and grow very easily; fiery, scarlet flowers. 25 cents each; \$2.50 per dozen. (1 to 2 feet.) June and July.

LILY OF THE VALLEY.

(CONVALLARIA MAJALIS.) Ready for delivery in November.



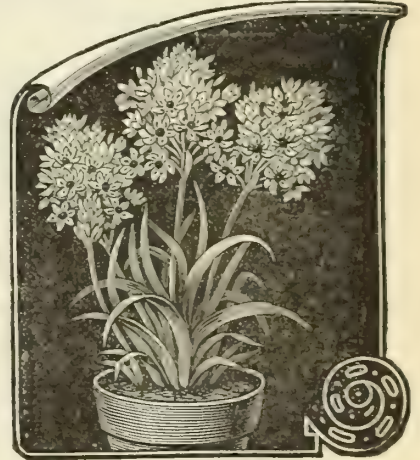
LILY OF THE VALLEY.

IXIAS Are admirably adapted for pot culture in the house; several bulbs can be placed in a seven-inch pot or pan. They should, unlike other bulbs, be potted rather firmly, and as early as possible; place in a dry, cool place like Hyacinths; until the flower spikes appear, little water is needed; then, however, keep pretty moist, and give them full light and air. After flowering, gradually open, and when ready shake out and store in paper bags until next autumn, or the bulbs can remain in the soil, which should be kept dry.

Finest Mixed. 2 for 5 cents; 20 cents per dozen; \$1.00 per 100.

ORNITHOGALUM.

A Splendid Winter-flowering Bulb. Sure to Bloom. Arabicum. (See cut.) This magnificent winter-blooming bulb from Arabia gives great satisfaction. The bulbs are large and solid somewhat resembling Hyacinths; the leaves are long, narrow and graceful; flower-stalks are thrown up to a height of 18 or 20 inches, and produce immense clusters of pearly-white flowers, each having a jet-black center. This distinct character, together with the durability of flowers, makes this grand novelty the best winter bloomer now offered. Bulbs can be planted in four-inch pots, and given the same culture as Hyacinths. If planted in open ground, they should be given slight protection. Price of bulbs sure to bloom, 5 cents each; 40 cents per dozen; \$2.00 per 100.



ORNITHOGALUM ARABICUM.

MADEIRA VINES.

The Vine is a popular and favorite tuberous rooted climbing plant, with racemes of feathery white flowers, very fragrant. It will grow anywhere, but does best in a warm, sunny location. There is nothing in the way of a climbing plant for the house that is more satisfactory than the Madeira Vine. It is not hardy. 5 cents each; 50 cents per dozen.

LACHENALIAS.

These are early spring-flowering bulbs, more especially adapted for greenhouse or winter-garden culture. The spotted foliage and spikes of brilliant flowers make them exceptionally striking. They are of the easiest culture and can be had in bloom by Christmas if desired. If grown in cold frame should be protected from frost.

Pendula. (See cut.) Flowers bright red, tipped with green and yellow. Very strong grower and handsome. 20 cents each; \$2.00 per dozen.



LACHENALIAS.

MONTBRETIA.

Fire) Crocosmiaeflora. This is destined to hold a high place among summer-flowering bulbs as soon as it is more widely known. Very floriferous, bearing lovely spikes of star-like flowers, an inch or more across, which continue in bloom for months. Color, intense orange-scarlet. If left undisturbed and mulched to protect in the coldest sections in winter, they form luxuriant clumps, 3 for 10 cents; 35 cents per dozen; \$2.00 per 100.

NERINE.

Nerine Sarniensis. Sometimes called the "Guernsey Lily" and "Japanese Spider Lily." In Japan it is perfectly hardy, but for this climate we would recommend thorough protection against frost. It is better adapted for house pot-culture. It sends up flower stalks 9 to 12 inches, which are crowned with umbels of bright-red flowers, with long, curved stamens, giving it an unusually graceful and attractive appearance. 20 cents each; \$2.00 per dozen.

A well-known, charming, late spring flowering plant, producing racemes of white flowers, which effuse a pleasing and delicious odor, and render it a universal favorite. Being of dwarf habit, with a profusion of deep green foliage, and flourishing well in shady places, where few other plants will succeed, it is sought after by all who love beautiful flowers. It grows well in pots, and in midwinter its beautiful racemes of snowy flowers are ever welcome. For pot culture the selected "flowering pips" are best to use, and moisture is indispensable. To encourage the development of flower and foliage simultaneously, some growers invert a flower-pot over the crowns until some progress in growth has been made, after which the plants are removed to a less shady situation. During the whole period of growth abundance of water must be given.

FLOWERING PIPS, selected.

Per dozen.....	\$0 25
Per bundle of 25 Pips.....	50
Per 100.....	1 50
By mail.....	1 75

OXALIS...

A GENUS of very pretty, neat-growing plants, elegant in foliage and bloom, the latter being produced in great profusion and embracing a wide range of colors. They are the best bulbs we know of for growing in pots for window decoration, their dwarf and spreading habit rendering them specially desirable. They are of the easiest possible culture; may be planted at any time, and if good, rich soil is used, will do well without a great deal of attention.

Bermuda Buttercup, greatly improved selection from *Oxalis Cernua*, grown in the congenial soil and climate of Bermuda until the bulbs have attained great strength, producing bulbs, plants and flowers larger and more luxuriant than the common variety. It is one of the finest of winter-flowering plants for pot culture, of strong, luxuriant growth; one bulb is sufficient for a 6 or 8-inch pot. The great profusion of bloom produced in uninterrupted abundance for weeks is astonishing. The flowers are of the purest bright buttercup yellow. Well-grown plants have produced as high as 70 flower-stems at one time, and over 100 flower-stems in one season. 3 for 10 cents; 35 cents per doz.; \$2.50 per 100.

	Doz.	100.
Alba, pure white.....	3 for 10 cents	\$0 25 \$2 00
Bowii, bright crimson, very large.....	" "	25 2 00
Cernua, single, canary-yellow "	" "	25 2 00
Cernua, double "	" "	50 3 50
Deppee, light crimson.....	" "	20 2 00
Rosea, rose.....	" "	25 2 00
Fine Mixed.....	" "	20 1 50



BUTTERCUP OXALIS.

PUSCHKINIA

Compacta. A perfectly hardy bulbous plant of great beauty; its numerous light blue flowers spring up from the center of its peculiar shaped leaves. Especially recommend for edging or borders, flowering in April and May. 3 for 10 cents; 35 cents per doz.; \$2.50 per 100.



PÆONIES DOUBLE HARDY HERBACEOUS.

FOR the past few years the Pæony has seemingly taken new life, and is now receiving more attention both in this country and Europe, which it richly deserves. With the introduction of new varieties from China and Japan, and by hybridizing these varieties with our own best sorts, new varieties have been obtained, which for beauty of form, elegance of color, and delicious fragrance, almost rival the rose, the carnation, and the water-lily. The Pæony is thus far free from all insects and diseases, and is perfectly hardy in all situations.

- Actæon, delicate pink.
- Alba Imbricata, ivory white, choice.
- Acasta, flesh, threadlike petals in center.
- Arethusa, soft, delicate pink.
- Arsene Meuret, rose, semi-double, fine.
- Bono, very fine rose.
- Candidisseina, clear ivory white.
- Dai, flesh, extra fine.
- Jeanne d'Arc, rosy pink, white center, fine.
- Lady Bramwell, silvery rose, extra fine.
- Madame Ducl, large salmon rose, silver striped.
- Madame Chaumy, bright pink, tinged flesh, large and full, one of the best late varieties.
- Mrs. Lowe, double white.
- Pearl, white, shaded flesh, fine flower.
- Rosea Grandiflora, soft pink, large and double.
- Thurlow's, double rose, fine deep rose.
- Vertumnus, flesh, yellowish inner petals, extra.
- Vulcan, dark cherry rose.

HERBACEOUS PÆONIES.

Price, 50 cents each; \$4.50 per dozen; or the entire set of above 18 varieties, with names, for \$7.50, purchaser paying transit.

- Artemise, soft rose pink, fine.
- Duchesse d'Orleans, salmon pink.
- De Brettonneau, flesh-colored yellow.
- Francois Ortegal, purplish crimson, showy.

- Globosa, pink and yellow.
- Henri Behrens, salmon rose.
- J. Descains, white, yellow center.
- Lady Derby, flesh.

- Madame Breon, dark brilliant purple.
- Madame Lebon, deep rose or cherry, large.
- Pottsi, purple crimson, showy.
- Splendida, beautiful soft rose.

Price, 35 cents each; \$2.50 per dozen; or the entire set of above 12 varieties, with names, for \$3.00, purchaser paying transit.

STANDARD VARIETIES.

	Each.	Doz.	Each.	Doz.
Double White.....	\$0 25	\$2 50	Double Rose.....	\$0 25 \$2 50
" Crimson.....	25	2 50	" Mixed.....	20 2 00

Add 5 cents per bulb on Pæonies, if by mail.

TRITOMA (Red Hot Poker or Flame Flower).

Uvaria Grandiflora. For planting in clumps or among shrubbery it is one of the grandest of all plants. The flowers are yellow and red, borne on stately stalks, making an effective display from August to frost. Hardy, with slight protection. 35 cts. each; \$2.00 per dozen



..RANUNCULUS..

AMONG dwarf flowers these are unrivalled for lovely form and bright and attractive colors, ranging through gorgeous shades of white, crimson, yellow, purple, and black, many of them being beautifully marked with other shades. They flower profusely in pots in the house, or if grown in frames, in the spring. (See cut.)

Turban Mixed. Peony formed flowers, large and early, vivid colors, 2 for 5 cents; 20 cents per dozen; \$1.00 per 100.

Giant French Mixed. remarkably vigorous growers, with immense and gorgeous flowers. 2 for 5 cents; 20 cents per dozen; \$1.00 per 100.

Double Persian Mixed, Camellia or rose-shaped flowers, very double, rich variety of colors. 2 for 5 cents; 20 cents per dozen; \$1.00 per 100.

SNOWDROPS. There is nothing more beautiful than the little drooping blossoms of this modest flower. It gets along with almost any ordinary treatment, but by planting them here and there on the lawn a beautiful effect is secured, when their graceful snowy bells appear nestling in the grass in the early days of opening spring. They may also be grown in baskets or pots, for which purpose the double variety is the best.

Double flowering, 3 for 10 cents; 25 cents per dozen; \$1.75 per 100 | **Single flowering,** 3 for 5 cents; 15 cents per dozen; \$1.00 per 100.

ELWESII (The Giant Snowdrops). This is the largest and earliest of all the Snowdrops; flowers almost three times the size of the ordinary variety. It is very desirable for forcing, and slightly fragrant. 3 for 10 cents; 15 cents per dozen; \$1.00 per 100.

SPARAXIS. This exceedingly handsome class of flowers is well adapted for winter blooming in the house. They require the same treatment as Ixias; in fact, bulbs of each can be grown in the same pot with splendid effect. Sparaxis bear large, somewhat cup-shaped flowers, which well display the rare and beautiful combinations of color seen in this family.

Finest Mixed, 2 for 5 cents; 20 cents per dozen; \$1.25 per 100.

TRITELEIA. Uniflora. This is a perfectly hardy little gem, doing equally well in pots or planted in the flower border; it will grow in any soil, and produces an abundance of lily-shaped, violet-tinted, white flowers, which emit a fine Primrose perfume. Five or six bulbs grown in a six-inch pot make quite a picture when in flower. 2 for 5 cents; 20 cents per dozen; \$1.00 per 100.

TRITONIA. Exceedingly bright and free blooming bulbous plants, highly valuable for both garden and pot culture. The bulbs should be grown in pots in a cool frame during winter, and they can either be brought in the conservatory towards spring for blooming, or can be transferred to the open ground in May for summer blooming, or the bulbs can be kept dormant and planted out in May, like Gladiolus, and then be lifted in autumn for winter blooming.

Mixed Colors, 3 for 10 cents; 30 cents per dozen; \$2.00 per 100.

TROPÆOLUM. Splendid, slender, rapid-growing, graceful plants for wire globe and trellis-work. When planted in pots, use a light, rich soil, with plenty of drainage.

Jaratti, scarlet, yellow and black, 15 cents each; \$1.50 per dozen.

SPIRAEA or Astilbe. (Ready in November.) *Japonica.* The flowers are borne in large, feathery panicles of white, and last a long time in bloom. Large quantities are forced by florists, though a perfectly hardy herbaceous plant. This is undoubtedly one of the most beautiful and graceful subjects grown, its foliage and flowers combined making it one of the finest gems for winter and spring decoration in the house and conservatory. (See cut.) 10 cents each; \$1.00 per dozen; \$5.00 per 100; postage, 10 cents per root extra.

Japonica Grandiflora. **New, large flowering.** The flowers are very large, of the purest white, and stand well above the foliage in charming, airy sprays. Perfectly hardy, and unsurpassed for forcing. *Silver Medal Award by Massachusetts Horticultural Society.* 15 cents each; \$1.50 per dozen.

SCILLA. They are all quite hardy and adapted for cultivation in the open ground, and they are also very suitable for growing in pots. The flowers are borne in spikes of from six to twelve blooms each, the individual, bell-like blossoms being gracefully pendant.

<i>Campanulata</i> , white.....	3 for 10 cents	Doz.	100.	Siberica or Praecox , a perfect gem, with flowers	Doz.	100
" blue.....	" "	\$0 25	\$1 75	of richest metallic blue, very dwarf and hardy,	3 for 5 cents	\$0 15 \$1 00
" rose.....	" "	25	1 75	excellent with Crocus snowdrops.		
		25	1 75	Bifolia , beautiful bright blue.....	3 for 10 cents	20 1 25

WINTER ACONITE (Ecanthus Hyemalis.) Their golden blossoms form a striking contrast to the pure white snowdrop, hardy, is also an excellent pot plant. 3 for 10 cents; 25 cents per dozen; \$1.50 per 100.

SPRING SNOWFLAKE (Leucejum Vernum.) Flowers similar to monster snowdrops, and have the fragrance of the violet, blooms early in the spring, with white blossoms, tipped green. 3 for 10 cents; 30 cents per dozen; \$2.00 per 100.



SPIRÆA JAPONICA.

PLANTS FOR HOUSE DECORATION

DIRECT FROM OUR GREENHOUSES AT ARLINGTON.

How to Send Money. Remittances can be made in current bank bills, post-office orders, registered letters, or by drafts on New York and Boston. Post-office orders are preferable to all others, as there is no possibility of loss; but when these cannot be obtained, registered letters are surest to reach their destination.

We Will Guarantee The safe arrival of all plants sent by express. We would earnestly request our customers, on receipt of goods, to notify us at once if they have received any injury in transit, using special care to, in every case, give us a list of what was injured, that we can replace them. When received in good condition, our responsibility ceases. All plants not sent by express are at the risk of the purchaser.

COCOS WEDDELIANA.

The most elegant and graceful of all the smaller Palms. Its slender, erect stems are freely furnished with its gracefully arching leaves, made up of innumerable long, narrow pinnac or segments of a rich green color. The Cocos are admirable for fern dishes, as they are of slow growth and maintain their beauty for a long time. (See cut.) 3-inch pots, 12 inches high, 50 cents each; 4-inch pots, 16 inches high, \$1.00 each.



COCOS WEDDELIANA.

ASPARAGUS SPRENGERI.

(See cut.) A beautiful new variety of this graceful class of plants, especially useful to grow as a pot plant for house decoration or for planting in hanging baskets, where it makes a graceful drooping plant with branches or fronds, 4 to 5 feet in length, of a rich shade of green; a useful plant for cutting for decorating as it retains its freshness for weeks after being cut. It is easily managed and will grow in almost any position. 25 cents each; \$2.50 per dozen.



ASPARAGUS SPRENGERI.

Aspidistra Lurida Variegata.

A beautiful plant, with large, lance-shaped leaves, finely variegated with clear, cream-colored stripes. An elegant window or conservatory plant of the easiest culture. \$1.00 each.

CROTONS. Assorted.

Gorgeously colored foliage plants, suitable for warm conservatories and greenhouses. 50 cents and \$1.00 each.

CAMELIA JAPONICA.

We offer splendid plants of these bushy, well-grown specimens; all in splendid health, and of thrifty, clean growth. The varieties are the best, and embrace double white, double pink, double red and double variegated. Price, 1st size, \$1.00 each.

BEGONIAS, in Variety. We have a large collection of

all the leading sorts, both the flowering and foliage sorts. 25 and 50 cents each; \$2.50 and \$3.50 per dozen.



CHINESE AZALEA.

ASPARAGUS PLUMOSUS NANUS.

One of the handsomest of our foliage plants. The leaves are a bright green, are gracefully arched, and are as finely woven as the finest silken mesh; their lasting qualities when cut, are remarkable. Strong plants, 25 cents each; \$2.50 per dozen.

AZALEA. Chinese Azalea.

Beautiful plants for window or conservatory decoration. Few plants reward the cultivator more liberally with bloom than these. The plants we offer are fine, shapely specimens, with well-formed heads of the best and most distinct kinds, and even when not in flower are fine decorative plants. Our collection comprises the cream of the best Continental establishments; all the sizes offered will flower freely in proper season. Strong plants by express.

- 1st size, 14-16 inch heads..... \$1.50 each; \$15.00 per dozen.
- 2d size, 12-14 inch heads... .. 1.00 each; 10.00 per dozen.
- 3d size, 10-12 inch heads..... .75 each; 7.50 per dozen.

ARAUCARIA EXCELSA. Norfolk Island Pine.

Various names have been suggested for this grand plant to properly convey to the mind the appearance of it. Some have called it the "Christmas Tree Palm," from its resemblance to a Christmas tree; others have called it the "Star Palm," because the leaves are arranged to form a perfect star, but no descriptive name can give any adequate idea of its beauty. It has deep green, feathery foliage, arranged in whorls, rising one above the other, at regular distances; its symmetry of form, grace and beauty of foliage are unequalled in the vegetable kingdom. It is easily grown in the house and is highly ornamental. (See cut.) Extra fine plants, 24 to 30 inches high, \$3.00 each; 15 to 18 inches high, \$2.00 each.



ARAUCARIA EXCELSA.

very best plants for table or parlor decoration; its thick, leathery leaves enable it to stand excessive heat and dryness, while its deep glossy green color always presents a cheerful aspect. Fine plants, 50 cents, 75 cents and \$1.00 each.

DRACÆNA.

Indivisa (The fountain palm). An excellent contrast when used with palms and other decorative plants in the house, and in this respect is unsurpassed for hardiness. 50 cents and \$1.00 each.

Terminalis. A splendid plant for house and window decoration, with bright, tropical-looking foliage of rich crimson color, beautifully marked with white and pink in well-developed plants. Good-sized plants for 50 cents each.

FICUS.

Ficus Elastica. The well-known India-rubber tree, one of the very best plants for table or parlor decoration; its thick, leathery leaves enable it to stand excessive heat and dryness, while its deep glossy green color always presents a cheerful aspect. Fine plants, 50 cents, 75 cents and \$1.00 each.



FICUS ELASTICA.

GREVILLEA ROBUSTA.

(The Australian Silk Tree.)

A magnificent plant for decorative purposes, quicker growing than a Palm, and equally effective; of easy growth; finely cut foliage, rivaling a rare Fern. The young growing leaves are a light bronze color, the tips being covered with soft down, closely resembling raw silk, hence the name, "Silk Tree." In its native place it attains magnificent proportions and produces an abundance of bright, orange-colored flowers. The leaves are fine for design, so fern-like and not liable to wilt. No collection complete without it. 25 cents each; larger size, 50 cents.

PANDANUS. Screw Pine.

Pandanus Utilis. Also called Screw Pine from the arrangement of the leaves on the stem. This is one of the most useful of our ornamental foliage plants; excellent for the center of vases and baskets, or grown as a single specimen; for in or out-door decoration. \$1.00 to \$2.00 each.

Veitchi. This is one of the most attractive of decorative plants. The leaves are light green, beautifully marked with broad stripes and bands of pure white, and gracefully curved. \$1.00 to \$3.00.

PALMS

Palms are now indispensable in all decorations, whether for apartments, conservatories, or for tropical bedding in summer. The large demand for the past few years has induced us to considerably increase our facilities for growing this class of stock. The varieties enumerated below are those best adapted for house culture.

KENTIAS.

The Kentias, both *Belmoreana* and *Fosteriana*, are the hardiest in cultivation, and give better satisfaction as a house plant than any other varieties. They are of slow growth, and are not affected by the dust and dry atmosphere of the house, and were we to select one Palm only, it certainly would be a Kentia. The two varieties are of similar appearance, the former being dwarfer and more spreading, and the latter is of stronger growth, with broader, heavier foliage.

ARECA LUTESCENS.

This majestic Palm is thought by many to be without a peer for strength and elegance. 50 cents each for 4-inch pots; \$1.00 each for 5-inch pots; larger size, \$2.00.

KENTIA BELMOREANA.

4-inch pots, 5 to 6 leaves, 15 inches.....\$1.00 each.
5-inch pots, 6 leaves, 20 to 22 inches..... 1.50 each.
6-inch pots, 6 leaves, 24 to 30 inches..... 2.50 each.

LATANIA BORBONICA.

Chinese Fan Palm. This popular variety is too well known to require description. We grow them at Arlington.

5-inch-pots, 6 leaves, 15 inches high\$1.00 each.
6-inch pots, 6 leaves, 20 inches high..... 1.50 each.

Phoenix Reclinata. A strong-growing form of the Date Palm, with dark green, glossy foliage; a most desirable variety.

5-inch pots, 15 inches high\$1.00 each.
6-inch pots, 24 inches high 1.50 each.
7-inch pots, 30 inches high 2.00 each.



KENTIA BELMOREANA.

FERNS

Adiantum Cuneatum. A really graceful fern, its delicate fronds being much used in cut flower. 25 cents to 50 cents each.

Nephrolepis Exaltata Bostonensis. A really graceful fern, multiplying very fast in throwing out vines on which grow several plants again. Per plant, 25 cents; 3 for 50 cents; large plants, from 50 cents to \$2.50 each.

Nephrolepis Davalleoides Furcans. A beautiful and distinct crested variety, with numerous arching fronds, 3 to 4 feet long. 50 cents to \$2.00.

Davallia Stricta. One of the finest of the ferns for pots and fern pans; fronds of strong texture and of a beautiful shade of green. 25 cents to 50 cents.



NEPHROLEPIS EXALTATA BOSTONENSIS.



LATANIA BORBONICA.

HARDY ROSES . . . FOR FALL PLANTING.

Ready About Oct. 1.

WE have an exceptionally fine lot of Hardy Roses two and three years old, grown on Manetti stock, and if planted this fall will give a good crop of blooms next season. The plants are all large strong rooted, and must be forwarded by express.

We have a large variety of Hardy Roses which we are unable to give the name of on account of space. We can supply almost any variety.

Our selection of kinds, 35 cents each; \$3.00 per doz.
Your selection of kinds, 40 cents each; \$3.50 per doz.

- Able Carriere.** Velvety crimson, very bright center.
- Alfred Colomb.** Rich red, very fragrant.
- Anna de Diesbach.** Lovely carmine, large double, very free bloomer.
- Baron de Rothschild.** Bright, rosy crimson.
- Baroness de Rothschild.** Light pink, often deepening to rose.
- Captain Christy.** Delicate flesh, rosy center, medium size.
- Directeur Jensen.** Rosy carmine, with velvet purple shadings.
- Duke of Edinburgh.** Bright crimson, large, and double.
- Fisher Holmes.** Crimson-scarlet, perfect form, free bloomer.
- General Jacqueminot.** Brilliant crimson.
- Gloire Lyonnaise.** Creamy white, shading to lemon in center.
- Heinrich Schultzer's.** Delicate rose, very fragrant.
- Jules Margotten.** Carmine rose, free bloomer.
- La France.** Silvery rose, changing to pink, very fragrant.
- Magna Charta.** Pink, suffused carmine.
- Mrs. John Laing.** Soft pink, large and fine.
- Mme. Gabriel Luizet.** A grand pink, much used for forcing.
- Paul Neyron.** Deep rose, the largest variety.
- Persian Yellow.** Yellow, the deepest yellow rose.
- Prince Camille de Rohan.** Deep velvety crimson.
- Ulrich Brunner.** Cherry red, a grand variety.

RAMBLER CLIMBING ROSES, 50 Cents Each.

The Crimson, Pink, White and Yellow.

STRAWBERRIES.

POT-GROWN STRAWBERRY PLANTS. Ready by the dozen and 100 after Aug. 1, and by the 1,000 after Aug. 10. Layer plants will not be ready generally till Sept. 1, except in a few cases.

We fill orders for them as fast as possible.

Those marked (P) are pistillate, and will not fruit alone, but should be placed near some perfect flowered variety.

Price, 50 cents per doz.; \$2.50 per 100; \$20.00 per 1,000.



No. 1, Parent Plant. No. 2, Pot-Grown Plant. No. 3, Rooted Layers.

THE MARSHALL is the largest strawberry ever exhibited, and has taken more first prizes since its introduction than any other strawberry ever exhibited in the Horticultural Society's rooms at Boston.



PRINCE CAMILLE DE ROHAN.

CLYDE. It is spoken of by those who have grown this berry as being the nearest to a perfect berry of any now on the market. The berry is large, even shape, and is borne in large quantities on strong plants. It is one of the best shippers we have.

PARKER EARLE. A robust grower with perfect flowers; berries are large, conical, uniform, glossy crimson, firm, reddish, and quality the best. As a producer it has no equal.

BRANDYWINE. The berries are large, roundish, conical, regular and uniform, bright, glossy crimson, very handsome, firm and solid, excellent quality.

ENORMOUS. In general appearance it resembles Bubach No. 5, but the plant is a better grower, and the fruit is larger and much firmer. The larger specimens are variable in shape, color deep crimson, quality good.

MARY (P). The plant is very vigorous, exceedingly hardy, immensely productive; the berries are uniformly large size, obtuse-conical in form, regular in size and shape, color deep crimson, firm and solid, and of a rich, high quality.

In layer plants about Sept. 1, at these prices.

	Per doz.	100.	1,000.		Per doz.	100.	1,000.		Per doz.	100.	1,000.
Brandywine	\$0 30	\$1 50	\$6 00	Crescent (P)	\$0 30	\$1 00	\$4 00	Lovett's Early	\$0 30	\$1 00	\$5 00
Barton Eclipse	30	1 00	5 00	Greenville (P)	30	1 00	5 00	Leader	30	1 00	5 00
Belmont	30	1 50	6 00	Gandy	30	1 00	5 00	Marshall	30	1 50	6 00
Beverly	30	1 00	5 00	Haverland (P)	30	1 00	5 00	Sharpless	30	1 00	5 00
Bubach No. 5 (P)	30	1 00	5 00	Hersey	30	1 00	5 00	Timbrell (P)	30	1 50	6 00
Bederwood	30	1 00	5 00	Parker Earle	30	1 50	6 00	Mary (P)	30	1 50	6 00
Clyde	30	1 50	7 00	Enormous	30	1 50	6 00				

CHOICE FLOWER SEEDS FOR FALL SOWING.

	Per Pkt.		Per Pkt.		Per Pkt.
Candytuft, White Rocket	\$0 05	Forget-me-not, Fine Mixed	\$0 05	Pansy, Special Mixture	\$0 15
Carnation, Pink, Double Mixed	20	Daisy, Choice Mixed	05	“ Fine Mixed.....	10
Calendula, Meteor	05	Gloxinia, Hybrida	25	Primula, Sinensis Fimbriata	20
“ Prince of Orange.....	05	Mignonette, Machet	10	Stocks, Cut and come again	10
Cineraria, Hybrida Grandiflora	40	“ Common.....	05	“ Boston Florists.....	15
Cyclamen, Persecum Giganteum	40	Pansy, Bliss' Perfection, the	25	“ Grand Perfection.....	15
Hollyhocks, Double Mixed	25	finest.....	25	Sweet William, Finest Mixed	10

For other varieties of Flower Seeds, see our Seed Catalogue.



Woodason's Vaporizing Bellows. This throws a spray as fine as mist, rendering the use of strong solutions of kerosene, fir tree oil, tobacco soap and poisonous fluids perfectly safe on tender-foliaged plants, killing the insects without burning the leaves; it also forces the fluids into every crevice. Price, large size, \$2.00; small size (for house use), \$1.25.

Fumigators. For smoking greenhouses; self acting, and may be left with perfect safety; all the materials consumed, and gives off a dense smoke; made of extra heavy galvanized iron.

BOSTON.

No. 1. 20 in. high, holds 1/2 bu. stems.....\$3.50
 No. 2. 24 in. high, holds 3/4 bu. stems..... 4.00
 No. 3. 28 in. high, holds 1 bu. stems..... 4.50

EUREKA.

No. 1. 12 in. high, holds 1/2 pk. stems.....\$1.20
 No. 2. 16 in. high, holds 1 pk. stems..... 2.00
 No. 3. 20 in. high, holds 3/2 bu. stems..... 2.50
 No. 4. 24 in. high, holds 3/4 bu. stems..... 3.50

Glazing Points, Van Reyers, mailed, per M \$.75
Pincers, for above, mailed50
Tool, mailed12

Hyacinth Glasses, in three colors—blue, green and purple. 15 cents each; \$1.50 per dozen.

Hot Bed Mats, straw, 3x6 ft., per dozen, \$14.50 1.25

Straw, 6x6 ft., reg. size, per dozen, \$16.80 1.50

Burlap, 76x76 in., lined with wool and cotton waste, per dozen, \$9.0090

Sash, 3/4 in., 3x6 in., unglazed 1.10
 Glazed and painted 2.25

Jardinieres, in sizes to hold from 5 in. to 8 in. standard pot. Prices from 40 cents to \$1.50 each.

Insecticides of all the leading kinds, always on hand.

Labels, Permanent, zinc, per dozen, 50 cents; per 100, \$3.50. Wooden garden labels are put up in packages of 100. Pot, plant and tree labels in packages of 500.

Per 100. Plain, per M. Painted, per M.
 Garden, 8-in. \$0.40 \$3.50 \$4.50
 12-in. .50 4.50 5.50
 Pot, 3 1/2-in. .10 .50 .70
 4-in. .15 .60 .75
 5-in. .20 .70 .85
 6-in. .25 .85 1.00
 Tree, 3 1/2 in., iron wired, 1.00 1.25
 3 1/2 in., copper wired, 1.50 1.75

Mastica. Prepared white lead and putty, 1 gal. 1.25
 Machine for applying above 1.00



Plant Sprinkler, Rubber, straight neck, 1/2 pint size, 50 cents; 3/4 pint, 60 cents; 1 pint, 80 cents.
Rubber, angle-neck, 1/2 pint, 60 cents; 3/4 pint, 70 cents; 1 pint, 90 cents. (Postage 10 cts. extra.)
Goldman's Atomizer. 40

Plant Tubs, Cedar. Made of white cedar, and bound with extra heavy iron hoops. Drop handles of special pattern. Substantial iron legs of original design. Removable perforated bottom, painted green.

Plant Sprinkler.

	OUTSIDE DIAM.	LENGTH OF STAVE.	
No. 3.	21 in.	18 in.	3.50
" 4.	19 1/2 "	16 "	3.00
" 5.	18 "	14 "	2.50
" 6.	16 1/2 "	13 "	2.25
" 7.	15 "	11 "	2.00
" 8.	14 "	10 "	1.75

Plant Tubs, Columbia cypress,

	DIAM.	HEIGHT.	
	9 in.	8 in.	.75
	12 "	11 "	1.00
	15 "	14 "	1.50
	18 "	16 1/2 "	2.00
	21 "	18 1/2 "	2.50
	24 "	20 1/2 "	3.00

Pots. Sizes and shapes as adopted and recommended by the Society of American Florists.

IN.	EACH.	POTS.		SAUCERS.	
		PER DOZ.	PER 100.	PER DOZ.	PER 100.
2 1/2	\$0.02	\$0.12	\$0.85		
3	.02	.20	1.15		
4	.04	.30	1.65	\$0.20	\$1.50
5	.05	.45	2.75	.30	2.00
6	.07	.72	4.25	.40	2.50
7	.09	.96	6.50	.50	3.25
8	.12	1.30	9.00	.60	4.25
9	.15	1.65	13.50	.70	5.25
10	.25	2.40	17.50	.96	6.00
11	.35	3.50	22.50	1.20	8.00
12	.50	4.00	27.00	1.75	12.00

BULB OR SEED PANS.			EACH.
Round, 6 in.,	per dozen,	\$0.72	\$0.07
" 8 "	" "	.96	.10
" 10 "	" "	1.55	.15
" 12 "	" "	2.15	.20
Square, 6x6 "	" "	2.25	.20
" 8x8 "	" "	2.50	.25
" 10x10 "	" "	3.00	.30
" 12x12 "	" "	4.00	.40
Pot Saucer, Wood fiber, 4 1/2 in.,	doz.,	\$0.70	.07
" " " 6 "	" "	.80	.08
" " " 8 "	" "	.90	.09
" " " 10 "	" "	1.05	.10
" " " 12 "	" "	1.20	.11
" " " 13 "	" "	1.40	.12

Protecting Cloth, Heavy grade, per yd., 12 cents; piece of 40 yds., \$4.50.

Medium grade, best for general use, per yd., 10 cents; piece of 50 yds., \$4.25. (Postage, 5 cts. yd. extra.)

Pruners, Water's Tree. 4 ft., 75 cts.; 6 ft., 85 cts.; 8 ft., \$1.00; 10 ft., \$1.15; 12 ft., \$1.25. Extra Knives, 20 cts.

Putty Bulb, Rubber. For glazing. Mailed, \$1.10..... 1.00

Raphia, for tying. Lb., 20 cts.; 10 lbs., \$1.50. (Postage 10 cts. lb.)

Shears, Pruning, malleable, with steel blades, coil spring, 40c.; flat spring, \$0.45

Grangers' flat spring30

Solid steel, 9-inch 1.75

Solid steel, 10-inch 2.00

Levin, Imp., medium sized, mailed, 60 cts.50

Levin, Imp., large sized, mailed, 85 cts.75

Hedge, 8-in. blade 1.25

" 9 " " 1.50

" 10 " " 1.75

Lopping, for limbs of trees 2.00

Rockdale, " " 24-in handle, 75 cts.; 41-in han., 1.00

Silkline, or Smilax Green Thread, largely used for tying in bouquet work, reels25

Spade, smooth back75

Ames extra quality 1.25

Stakes, Plant. Painted green. Less than 10 of a size.

	EACH.	PER DOZ.	PER 100.
Round, 2 ft.	\$0.03	\$0.25	\$1.75
" 3 "	.05	.50	3.25
" 4 "	.07	.75	4.75
" 5 "	.08	.90	5.50
Square, 2 "	.03	.25	1.55
" 3 "	.04	.46	2.95
" 4 "	.06	.67	4.30
" 5 "	.07	.78	5.00
Square, hard wood, for florists' use.			
28 in. long, per 100,	\$0.25	1,000,	\$2.00
" 36 "	.30	"	2.50
" 48 "	.45	"	3.75

Cane. Used by plant growers and greenhouse people for tying roses, pinks, etc. Length, from 5 to 12 feet, in bundles of 100 and 500, assorted sizes. Per 100, \$1.50.

Syringes, Improved Brass Garden. No. 3. Ladies' syringe, barrel 14 in. long, 1 in. diam., with jet and two rose sprays; the rose sprays, when not in use, are screwed on the sides of the barrel 3.25

No. 4. Unpolished barrel, 12 in. long, 1 in. diam., with one spray and one stream rose, 1.50

No. 5. Conical Valve Syringe, full size; barrel 18 in. long, 1 1/2 in. diam., two spray roses and jet; side attachments 5.25

No. 10. Barrel 18 in. long, 1 coarse and 1 fine spray, and one stream rose, with patent valves and elbow joint, 5.50

H. Barrel 18 in. long, 1 1/2 in. diam., with one spray, 2.00

Hydro-sprayer barrel, 15 in. long, 1 3/4 in. diam.; the spray nozzle contains about 100 holes, three times the number in an ordinary syringe; is fitted with a cyclone nozzle. With nozzle 6.00

For conservatory use 1.00

G. Barrel 16 in. long, 2 1/4 in. diam. Open rose syringe; one spray and one stream rose, side attachment and fixed elbow joint 4.00

Thermometers. Tested and guaranteed. Cannot be mailed.

Parlor. Wood case, metal scale50

Plate Glass, with brass supporters, 8 in. 1.50

Japanned tin cases; 7 in., 15 cts.; 8 in., 20 cts.; 10 in., 25 cts.; 12 in., 35 cts.

Hot Bed and Mushroom Bed, \$1.50 and \$2.00.

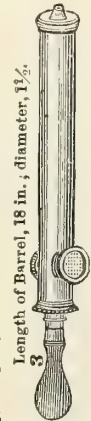
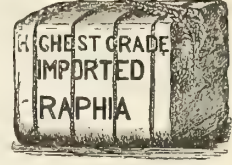
Twine. Strong, per ball20

Soft, for tying vines, etc., very strong, large balls25

Tarred Lathyras, for making mats or tying shrubs, per lb., 12 cts.; by the coil of about 50 lbs., 10 1/2 cts.

Wire, for florists' use in bouquets, Nos. 23 and 24, per stone, 1.00

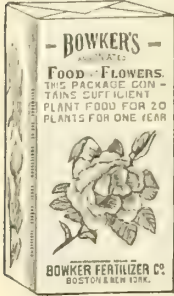
Unrivaled for florists' use in bouquets, per box of 12 lbs., cut 9 in. or 12 in. in length, Nos. 22, 23 and 24, per box, 1.00



MUSHROOMS. The culture of Mushrooms to those who make a business of it is very easy, but it is a subject of much difficulty to the novice. We cannot attempt here to give at length the necessary directions, but refer the inquirer to our Spring Catalogue, or some of the various publications upon the subject.

Our celebrated English Milltrack brand (made by the best makers in England) has gained a reputation among critical growers for its uniform good quality, and can be thoroughly relied on to produce a good crop of the best mushrooms. Price, 12 cents per lb.; 10 lbs. for \$1.00; 100 lbs. for \$9.00.

BOWKER'S AMMONIATED FOOD FOR FLOWERS.



A Fertilizer largely soluble in water, free from odor, and clean to handle.

It is made expressly for flowers grown in the house or garden. It contains the same plant food as stable dressing, and produces the same results, without giving off in the room that offensive and unhealthy odor which arises from the application of stable manure. It produces a healthy, luxuriant growth, and induces early and generous flowering, and cannot in any way harm the plants if applied according to directions, which are very simple, and accompany each package. 15 and 25 cents per box; if by mail, 20 and 40 cents. The first, best and strongest made.

GRASS SEED. A large stock of all varieties always on hand at market price.

JADOO. Thompson's Jadoo Vegetable Fibre, a new growing substance for all kinds of plants, used same as soil, for potting or shifting plants, or for sowing seed. 5 lb. box, 30 cents; 10 lbs., 50 cents; 25 lbs., \$1.10; 100 lbs., \$3.00.

Jadoo Liquid. For watering and fertilizing plants potted in Jadoo or soil. 25 cents per bottle (unmailable); \$1.50 per 2-gallon can. Special circular sent on application.

SHEEP MANURE. This is a pure natural manure, and the most nutritious food for plants. Its effect is immediate, much more lasting and healthy than guano or any other manure. It is the best of all manures for mixing with the soil for green-house plants. It makes the richest, safest, and quickest liquid manure, rivaling guano, without any deleterious effects. For flower or vegetable gardens, and as top dressing for lawns, it is unequalled.

DIRECTIONS. For mixing with soil, take one part manure to six parts soil. For making a liquid, take one pound manure to five gallons of water, which can be used with safety daily if necessary.

Price, 5-lb. package, 25 cents; 10-lb. package, 50 cents; 100-lb. bag, \$2.25; ton, \$40.00.

ROTTED FIBROUS PEAT. Having constant demands for Rotted Peat from many of our customers who want it, we have secured a quantity of the finest fibrous peat, to mix with other soils for use in potting plants, which has become thoroughly rotted and is invaluable for potting plants. Price, 1/2 peck, 20 cents; peck, 30 cents; bushel, \$1.00; barrel, \$2.00.

POTTING SOIL. Specially prepared for potting plants, with a sufficient quantity of fertilizer. Price, 1/2 peck, 20 cents; peck, 30 cents; bushel, \$1.00; barrel, \$2.00.

FERTILIZERS OF THE STANDARD BRANDS ALWAYS ON HAND.

INDEX

BULBS.	PAGE.
Agapanthus	9
Alliums	10
Alstromeria	9
Amaryllis	10
Anemones	11
Anemone Japanese	11
Anomatheac	9
Antholyza	9
Arum	11
Autumn Crocus	12
Babiana	12
Bleeding Heart	13
Brodiaea	12
Callias	11
Chionodoxa	13
Colchicum	12
Crocus	12
Crown Imperials	13
Cyclamen	13
Decentia	13
Erythronium	13
Freesia	13
Fritillaria	14
Funkias	13
Gladiolus	14
Helleborous	14
Hyacinths, Beds	4
Feathered	4
Grape	4
Mixed	2
Musk	4
Roman	4
Single and Double	3
White Italian or Parisian	4
Iris, English	14
Japan	14
German	14
Spanish	14
Isias	16
Lachenalias	16
Lilies	15
Lily of the Valley	16
Madeira Vines	16
Montbretia	16
Narcissus, Chinese	8

BULBS.	PAGE.
Narcissus, Double	9
Jonquils	9
Poet	8
Polyanthus	8
Single	7
Nerine	16
Ornithogalum	16
Oxalis	17
Peonies	17
Puschkinia	17
Ranunculus	18
Scilla	18
Snowdrops	18
Snowflake, Spring	18
Sparaxis	18
Spiraea	18
Triteleia	18
Tritoma	18
Tritonia	18
Tropaeolum	18
Tulips, Beds	6
Double	6
Duc van Tholl	6
Early Single	5
Late Flowering	5
Odd and Novel	6
Parrot	6
Vallota Purpurea	10
Winter Aconite	18

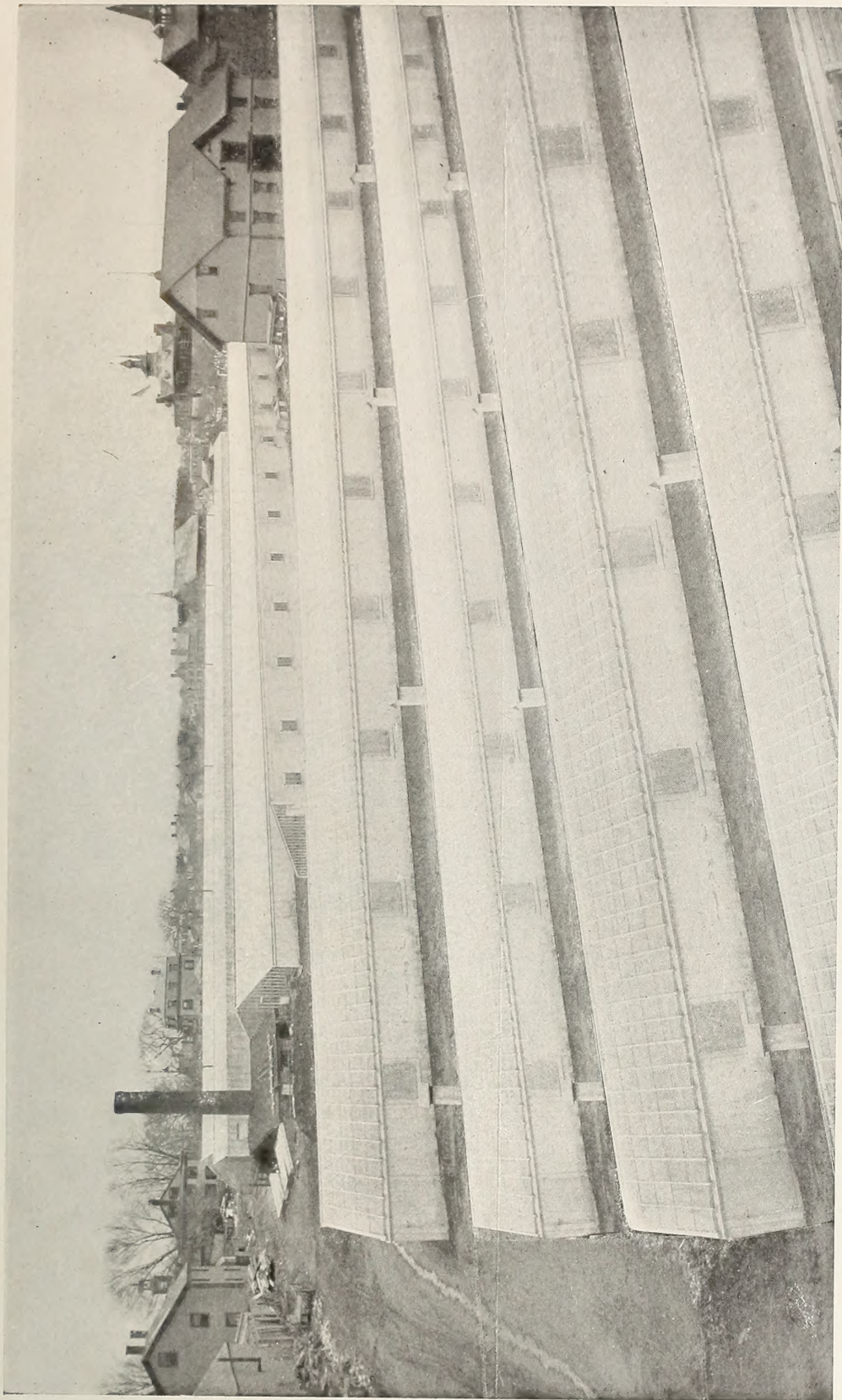
PLANTS.

Araucaria	20
Asparagus Sprengeri	19
Asparagus, Plumosus Nanus	19
Aspidistra Lurida Variegata	19
Azalea	19
Begonias	19
Camelia	19
Cocos Weddeliana	19
Crotons	19
Dracenas	20
Ferns	20
Ficus	20
Grevillea Robusta	20

PLANTS.	PAGE.
Palms	20
Pandanus	20
Roses	21
Strawberries	21

MISCELLANEOUS.

Bellows	23
Brooders	22
Bowker's Plant Food	24
Cane Stakes	23
Drinking Founts	22
Fumigators	23
Glazing Points	23
Hot-bed Mats	23
Hot-bed Sash	23
Hyacinth Glasses	23
Incubators	22
Insecticides	23
Jadoo Fibre	24
Jadoo Liquid	24
Jardinieres	23
Labels	23
Mastica	23
Pigeon Food	22
Plant Sprinkler	23
Plant Tubs	23
Plant Stakes	23
Pots	23
Poultry Supplies	22
Protecting Cloth	23
Pruners	23
Putty Bulbs	23
Raphia	23
Seeds, Flower	21
Seeds, Lawn	3d page of cover
Shears	23
Silkaline	23
Syringes	23
Tarred Lathyran	23
Thermometers	23
Tobacco Dust	22
Tobacco Stems	22
Twine	23
Wire	23



The photograph represented in the above shows only eight of the twenty-five greenhouses at Arlington. Giving, as it does, only a partial view, one can readily imagine the extent of our plant and the facilities we have at Arlington to conduct our plant business. During the winter we use all of these houses in growing flowering plants and vegetables. Many of them are used for growing lettuce. You will notice in the distance, between the last two houses, six electric light poles on which are six large arc lights; these are used at night for forcing the growth of lettuce. We grow the New Hothouse Lettuce introduced by us, which is especially adapted for growing inside. — W. W. Rawson & Co.



RAWSON'S ARLINGTON LAWN SEED

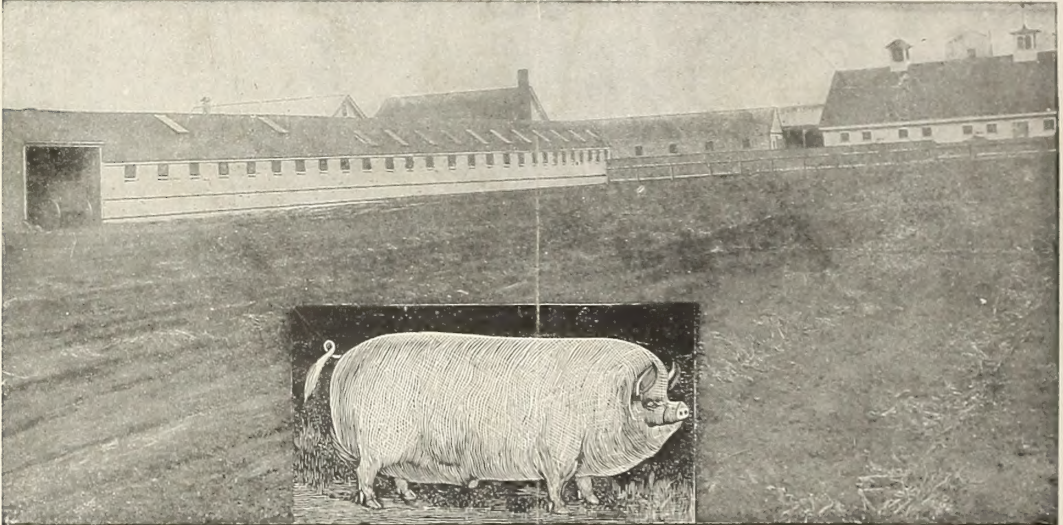
A MIXTURE OF EXTRA RECLEANED SEEDS

It has been the aim of this firm to obtain the best mixture of grasses for lawns. The result has been many trials of the different varieties, many changes in our mixtures, as our experience has taught us from time to time, and to-day we are confident that **Rawson's Arlington Lawn Seed** is the best that can be had for obtaining a beautiful deep green color in a short time from planting and retain the same during the season. It has no tendency to grow in clumps or stools, as we have allowed no grasses of this nature to be in the mixture. **The Rawson's Arlington Lawn Seed** is made up from extra re-cleaned seeds of the close growing varieties. We have taken special care that no light or slow growing varieties be included in this mixture, so that when the seed is sown, if the ground is in proper shape, **it will start at once and in a few days look green.**

The Arlington Lawn Seed being free from chaff starts at once before the weeds. This alone is worth more than the price of seed to anyone seeding a new lawn. It requires less seed to sow the lawn, weighs 32 pounds to the bushel. 1 quart will sow 600 square feet, 50c. 2 quarts will sow 1,300 square feet, 55c. 4 quarts will sow 2,700 square feet, \$1.00. 8 quarts will sow 5,400 square feet, \$2.00. 2 bushels or 64 lbs. will sow 1 acre, price per bushel, \$7.50.

RAWSON'S VELVET LAWN GRASS MIXTURE.

This mixture has been sold by us for the past twelve years and has always given satisfaction; it is composed of fine growing grasses. Many of the fine growing varieties, it is well known, have light seed which is almost impossible to obtain free from some chaff, and it is somewhat longer in germinating, but when once above ground, if properly managed, will produce a fine *velvety lawn* and permanent sod. Weighs 16 lbs. to bush. 1 qt. will sow 300 sq. ft., 20c. 2 qts. will sow 650 sq. ft., 35c. 4 qts. will sow 1,350 sq. ft., 65c. 8 qts. will sow 2,700 sq. ft., \$1.00. Sow 4 bush., or 64 lbs., to the acre. Price per bush., \$4.00.



We make a specialty of breeding Medium Yorkshire Pigs. The above photograph represents our main building, used entirely for this purpose. We keep 150 breeding Sows all the time, and are in a position to supply Pigs at any age desired, immediately.

Boars, 6 to 7 weeks old	\$5 00	Barrows, 6 to 7 weeks old	\$3 00
" 12 weeks old	7 00	" 12 weeks old	4 00
Sows, 6 to 7 weeks old	3 00	Barrow and Sow, 6 to 7 weeks old	5 00
" 12 weeks old	4 00	" " 12 weeks old	8 00

Special prices will be given where a large number are required.